
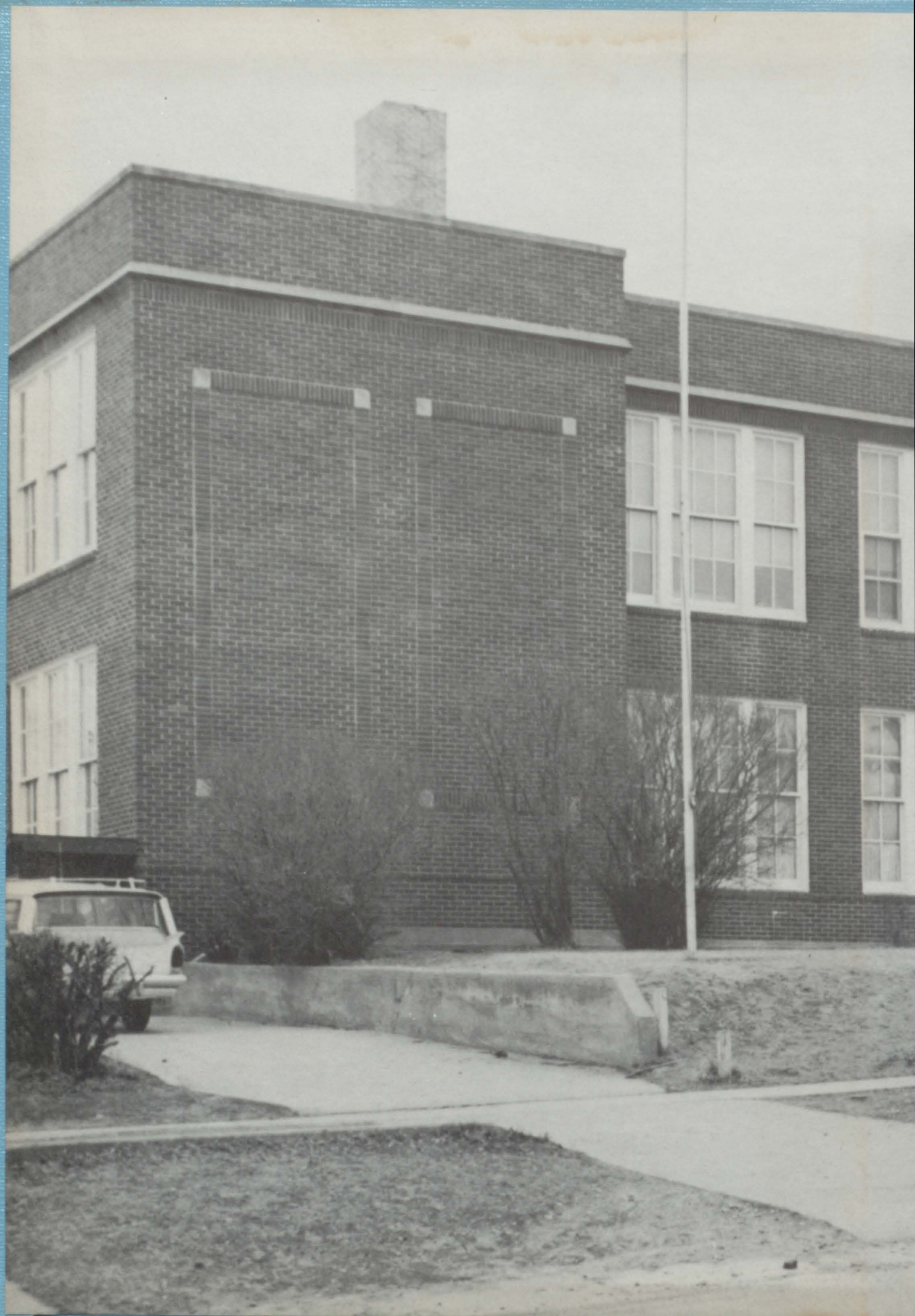


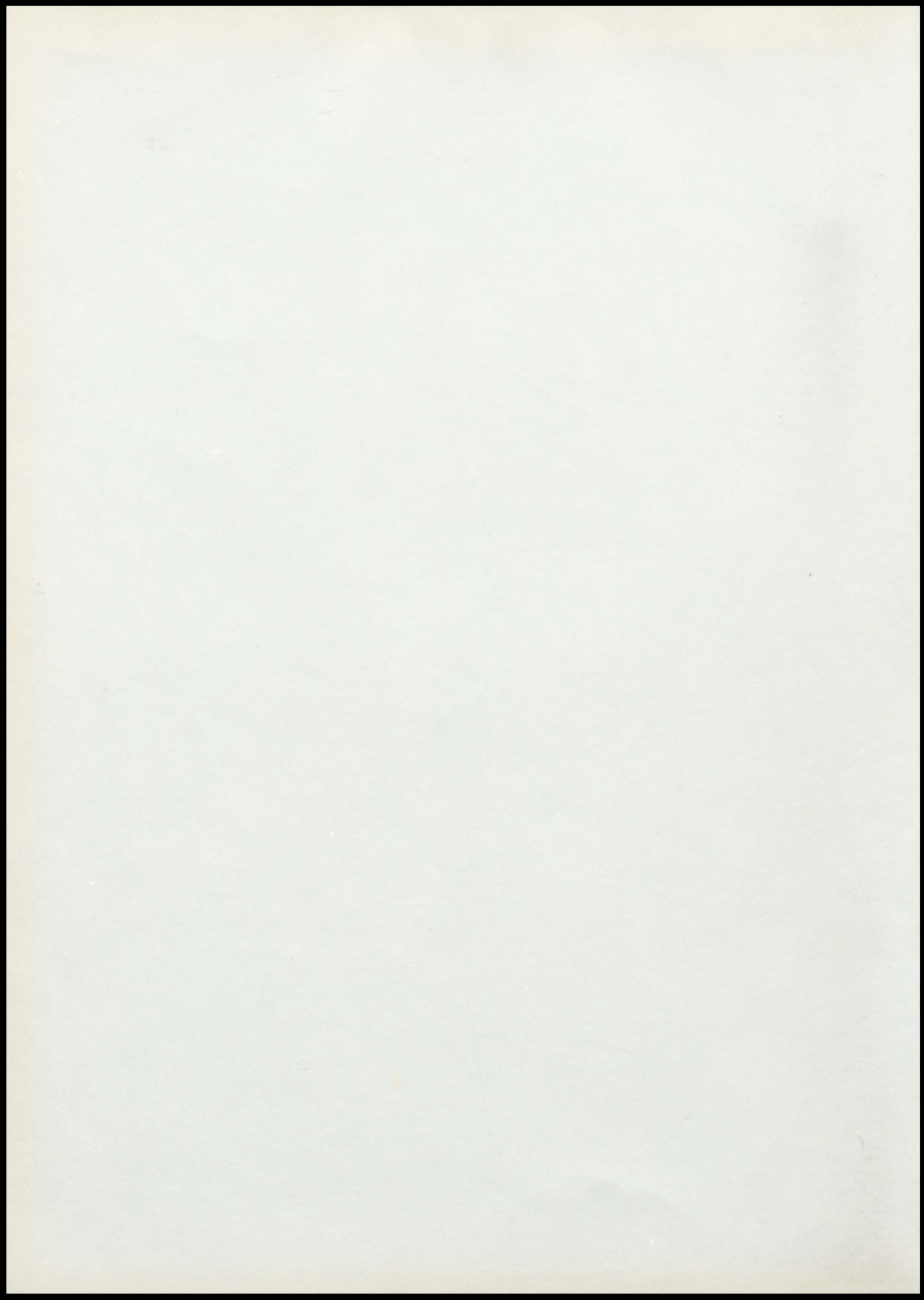
'61



**Cubette**







The

# CUBETTE

ALCESTER S. DAK.



'61

ALCESTER HI

# FOREWARD

Have you ever tried to put memories on paper?

That is usually thought of as the purpose of a yearbook.

The 1960-61 Cubette staff has attempted to do this. We would like to remind you of the experiences, activities, and friendships of which you were a part this year. To all they will have a different meaning. Some of the memories may be bright, while others may bring back thoughts of unforgettable moments. Whatever the case may be, we hope this book will present Alcester High as you have known it and would like to remember it in years to come.

# Administration





Superintendent W.B. Herbold

B.S. - N.S.T.C.  
M.A. - U.S.D.



Principal E.R. Dobberstein

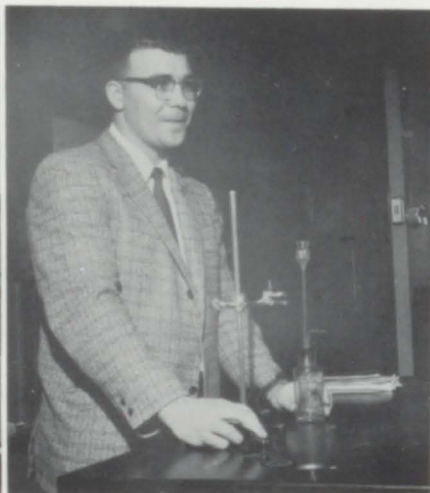
Agriculture  
B.S. - S.D.S.C.  
M. Ed. - U.S.D.

## FACULTY



Mrs. Elsie Aen

English  
Library  
B.A. - W.S.T.C.



Michael Thomas

Mathematics  
Chemistry  
B.S. - Gen, Beadle



Mrs. Esther Marble

English  
Grade Music  
B.A. - St. Olaf





Mrs. Mabel Herbold

German  
Counselor  
B.S.-U.S.D.  
M. Ed.-U.S.D.



John T. Smith

General Science  
Biology  
Coach  
B. S.-S.D.S.C.  
M. Ed.-S.D.S.C.



Gordon Crawford

Bookkeeping  
Shorthand  
General Business  
B.A.-N.S.T.C.

## MEMBERS



Marvin Thuringer

Social Science  
Physical Education  
Grade Coach  
B.A.-S.S.T.C.



Mrs. Virginia Ericson

Home Economics  
B.S.-S.D.S.C.



Hale Swanson

Music  
B.S. (Music Ed.)-Augustana



## SCHOOL BOARD

Seated: V. Larsen, M. Westin, R. Johnson. Standing: Supt. Herbold, L. Numsen, H. Trandahl. Not pictured: Mrs. M. Westin and L. Day.



Mrs. Anna Ofstad, Secretary

## AND STAFF



Mrs. Wayne Shuck and Mrs. Lee Paulson, Cooks.



Orrin Larson, Donovan Larson, Quentin Anderson, Bus Drivers.



Oscar Newberg, Custodian



SEATED: Mr. Herbold, Advisor, M. Day, S. McKellips, B. Dobberstein, J. Kratochvil, J. Satter. STANDING: D. Fickbohm, J. Hongslo, C. Tiltrum, D. Stene.

## STUDENT COUNCIL

STUDENT BODY PRESIDENT

The student council serves as a governing body of the high school. John Satter served as the student body president with the able assistance of the eight other members and Mr. Herbold, their advisor.

This year the student council's duties consisted of planning the Homecoming activities and the high school Picnic. They also visited the Crippled Children's Home in Sioux Falls and then carried out a drive for the March of Dimes.



JOHN SATTER



Karen at her Best



The New Look



Karen needs  
"Wild Root"



Rock-a-by Jim A.



Help me Mom!



Seventh-Inning  
Stretch



Gracia  
in Action



"Whirl-away"  
Julie



Norman,  
Watch that Step!



"Melva Ronning"



Young and Innocent



Yell, a little  
louder, Sharon

Be Careful, Merlyn



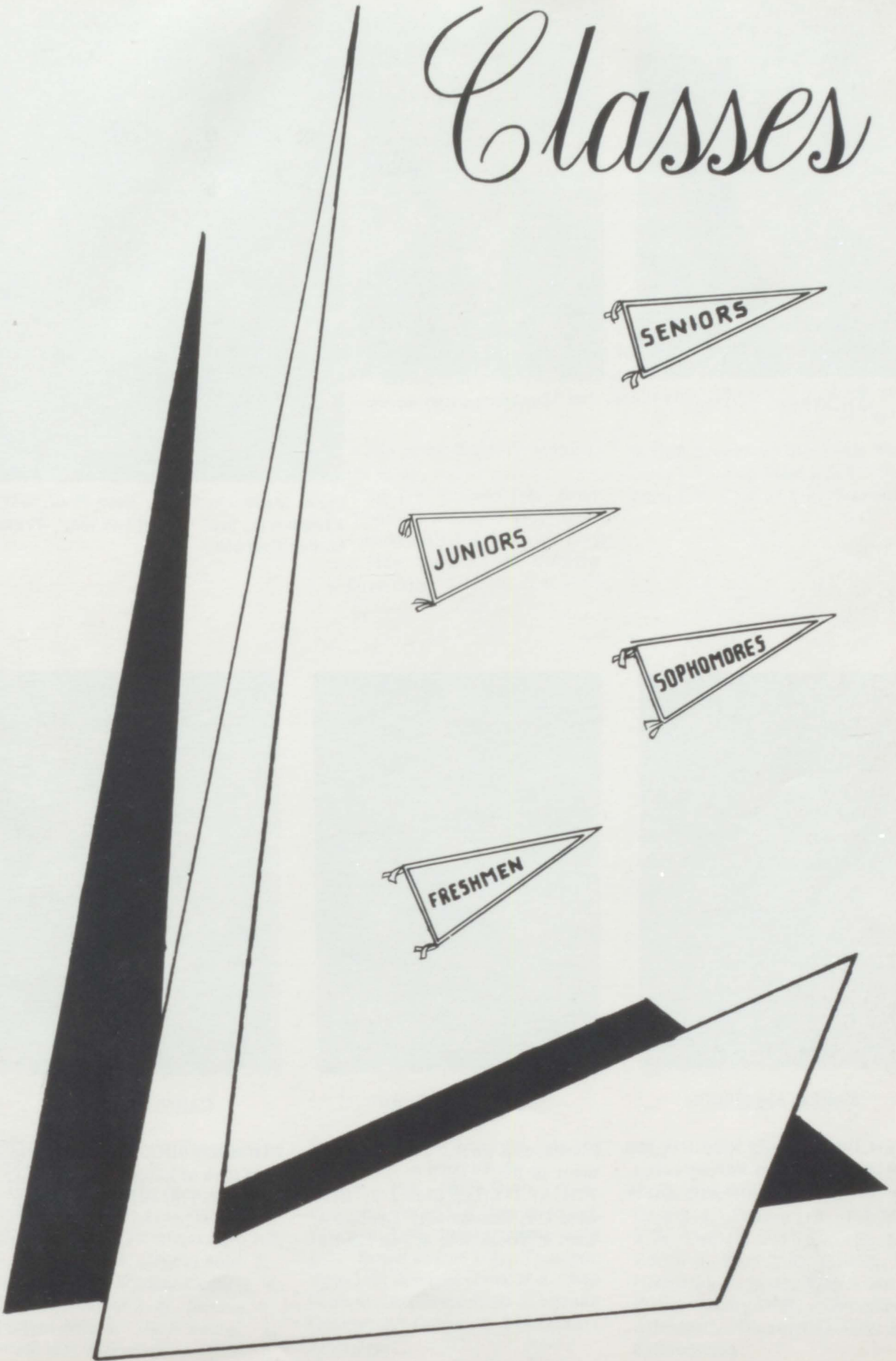
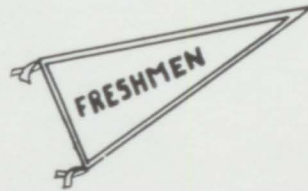
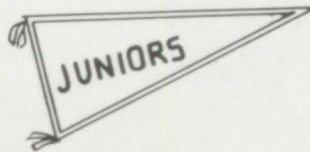
"Dimples" Welch



Firing-up the Squad



# Classes



# SENIOR CLASS

The class of '61 graduated with 33 of it's original 45 students. The class came through with some fine leaders, scholars, royalty, athletes, and a couple of fine class plays. They have had their own successes and momentous times. Some people may not long remember this class, but 33 students will never forget it.



Pres. Marvelyn Evjen, Vice Pres. Gary Kratchovil, Sec. Karen Lykken, Treas. Steven Ericson.



KAREN ANDERSON

She is little, she is wise, but she can be a terror for her size.  
F.H.A. 1-4, Pep Club 2-4, Girls Glee 4.



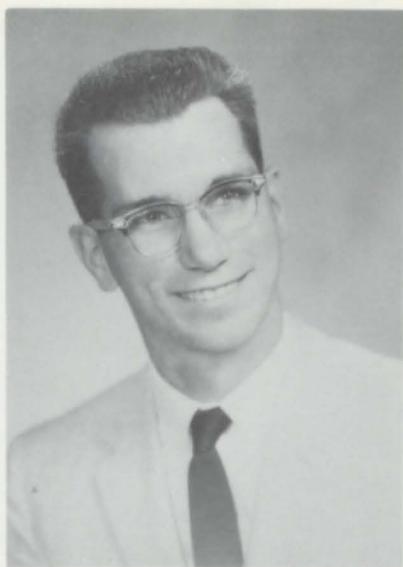
JUDITH BEELER

I believe in work, but I'm not in favor of it.  
F.H.A. 1-4; Pep Club 2-3; Girls Glee 1-4; Chorus 1-4; Declam 4; Band 4; Vocal Solo 4; Pep Band 4.



CAROL CAMPBELL

To worry little, and study less is my idea of happiness.  
F.H.A. 1-4; Girls Glee 1-4.



CLAYTON CAMPBELL

It's not that I don't like girls--- but there are more important things to do.



JAMES CLEMENTSON

He's a big game hunter; women are his game.  
Boys Glee 1-3, Chorus 1-4, Band 3-4, Football Manager 1-3, Golf 2-4, Basketball 1-4, Senior Play, Junior Play, Dakota 1-4, Cubette 3-4, Boys Octet 3, A-Club 4.



LELAND DANIELSON

School breaks up the whole day.  
Band 1-4, Pep Band 1, 3, 4, Boys Glee 1, 3, Chorus 1-4, Football 2



MARIETTA DAY

Happiness is love and I want to be happy.  
F.H.A. 1-4, Girls Glee 1-4, Pep Club 2-4, Chorus 1-4, Pep Band 1-4, Band 1-4, Instrument Solo 1-2, 2, Declam 3-4, Vocal Solo 3, Cubette 3-4, Student Council 4, Clarinet Quartet 3-4, Dakota 4, Clarinet Solo 4, Girls Sextet 4, Sweetheart Attendant.



COLLEEN DEAN

Her heart is not her own, but she knows it's in good hands.  
F.H.A. 1-3, Girls Glee 1-3-4, Chorus 1, Band 1-4, Pep Band 1-4, Library 1-4, Instrumental Solo 1-3, Brass Sextet 1-3, Trumpet Trio 1-2, Student Council 3, Pep Club 4, All-State Band 3, Brass Quartet 3, Dakota 4, Sweetheart Attendant.



SHARON DOTY

Why worry about life? You'll never get out of it alive.  
Girls Glee 1-4, Chorus 1-4, Pep Club 2-4, Dakota 1-3, Pep Band 2-4, Declam 2-3, Cubette 3-4, Editor 4, Band 2-4, F.H.A. 1-4, Historian 3, Junior Play, Senior Play, County DAR, Sweetheart Attendant, Clarinet Quartet 3-4, Salutatorian.



STEVEN ERICSON

Six foot two, eyes of blue, but oh what that six foot can do.  
F.F.A. 1, Boys Glee 1, 3, Chorus 1-4, Basketball 1, 2, 4, Declam 4, Track 1, 2, 4, Class President 1, Class Treasurer 4, Dakota 1, 4, Student Council 2, Vocal Solo 1, 3, 4, Cubette 4, A-Club.



MARVELYN EVJEN

I don't care how you spell my name, I'll change it someday just the same.  
Girls Glee 1-4, Declam 1, Dakota 3-4, Head Reporter 4, Chorus 2-3, Homecoming Attendant 2, 4, Pep Club 2-4, Pres. 4, Jr. Play, Cheerleader 3, F.H.A. Trea. 2, Reporter 3, Class V.P. 2, Pres. 4, Sweetheart 4, Betty Crocker.



DUANE FICKBOHM

A great deal of work is in me, but it has yet to come out.  
Band 2-4, Boys Glee 1, F.F.A. 1-3, Dakota 1-3, Cubette 1, Pep Band 3-4, Junior Play, Student Council 4.



CLIFFORD GUNNARE

Girls are bothersome, but I like to be bothered.  
Chorus 1-4, Boys Glee 1-3, Band 3-4, F.F.A. 1-4, Treasurer 4, Dakota 3, Basketball Manager 2-4, Basketball 1, Football 1-4, All-Conference 3-4, A Club 4, Homecoming Attendant 1, Class Treasurer 1.



GERALDINE HARTMAN

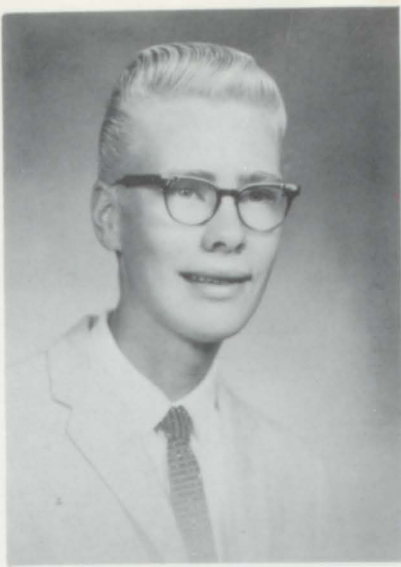
Just like a pair of scissors, always cutting up.  
F.H.A. 1-4, Girls Glee 1-4.



GARY HENDRICKS

I'm after the man who invented work.  
F.F.A. 1-4, Football 2-3, Track 2, Basketball 3.





RONALD HOLTHE

If study were the only cause of death, I'd live forever.  
F.F.A. 1-4



MARCELLA HUEBNER

If silence is golden, I'm dead broke.  
F.H.A. 1-4; Band 3-4; Declam 4; Pep Club 1-3; Cubette 3-4; Pep Band 3-4; Dakota 1; Senior Play.



GARY KRATOCHVIL

Greater men than I have lived, but I doubt it.  
F.F.A. 1-4, Secretary 4; Track 1; Football 1-4; Basketball 1-4; A Club President 4; Band 1-4; Golf 2-4; Cubette 3-4; Dakota 1; Class Secretary 1, Vice President 3; Student Council 3; Homecoming Attendant 3-4; Junior Play; Senior Play.



CAROL LUNDBERG

Lots of vitality, full of rascality. Declam 1-4; Glee Club 1-4; Pep Club 2-4; F.H.A. 1-4; Cubette 3; Dakota 1-4; Dakota Junior Editor 3; Dakota Editor 4; Homecoming Attendant 1; Class President 2; Junior Play; Senior Play.



KAREN LYKKEN

She says she studies, but we wonder.  
Chorus 1-4; Band 1-4; Girls Glee 1-4; Trumpet Trio 1-3; Pep Club 2-4; Pep Club President 3; F.H.A. 1-4; F.H.A. President 2, Vice President 4; Declam 3; Pep Band 2-3; Cheerleader 4; Cubette 3-4; Dakota 3-4, Business Manager 4; Homecoming Queen 4; Senior Play



BEVERLY PETERSON

She keeps cupid working overtime  
F.H.A. 1-4; Girls Glee 1-4; Pep Band 1-4; Chorus 1-4; Declam 1-4; Dakota 1-4; Vocal Solo 1-4; Band 1-4; Cubette 1; Class President 3; Instrumental Solo 2; Junior Play; Senior Play; Girls State; Minnie Larson Award.



CALVIN PETERSON

Why worry about life? You'll never get out of it alive. F.F.A. 1-4, Chaplain 4, Track 1, Football 2.



EDWARD PETERSON

He doesn't break rules, he just bends them a little. F.F.A. 1-3, Chaplain 3, Dakota 1-4, Treasurer 2, Secretary 3, Student Council 1.



LOIS PETERSON

The fact a girl isn't talking doesn't mean she has nothing to say. F.H.A. 1-4, Pep Club 1-4, Band 2-4, Pep Band 3-4, Junior Play, Cubette 1-4, Dakota 1-4, Library 1-4, Secretary-Treasurer 4.



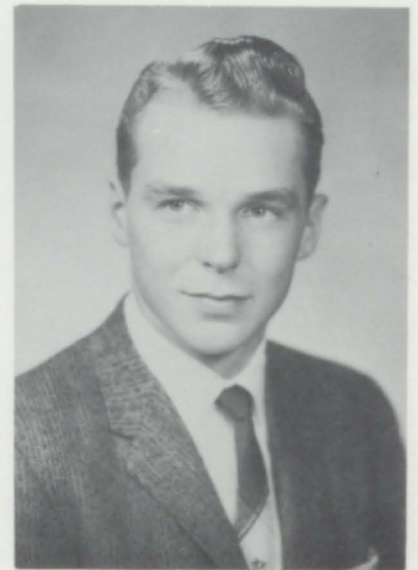
NORMAN RONELL

If he has the speed in life that he has in his car, he'll go places. Band 2-4, Chorus 2-4, Pep Band 2-4, Boys Glee 2-3, Cubette 4, Dakota 4.



CURTIS SANDVALL

Parking in the daytime, parking in the night, it's all the same whether dark or light. Band 1-4, Chorus 1-4, Pep Band 2-4, F.F.A. 1-4, Reporter 4, Boys Glee 2-3, Junior Play.



JOHN SATTER

There's a little bad in every good little boy. Chorus 1-4, F.F.A. 1-4, Vice President 4, Treasurer 3, Track 1-3, Basketball 1-4, Football 1-4, A-Club 4, Homecoming King 4, Attendant 2, Junior Play, Cubette 3-4, Business Manager 4, Octet 3, Student Council 1, President 4, Class Secretary 2, Boys State.



GORDON SCHOLLERMAN

I can resist everything except temptation.  
F.F.A. 1-4.



IONE SIEMERS

You don't have to hang from a tree to be a nut.  
Girls Glee 1-4, F.H.A. 1-4, Secretary 4, Pep Club 1-4, Vice President 3, Library 1-4, Head Librarian 4, Dakota 3-4, Junior Assistant Editor 3, Assistant Editor 4, Senior Play, Junior Play, Sweetheart Queen, Homecoming Attendant 3-4.



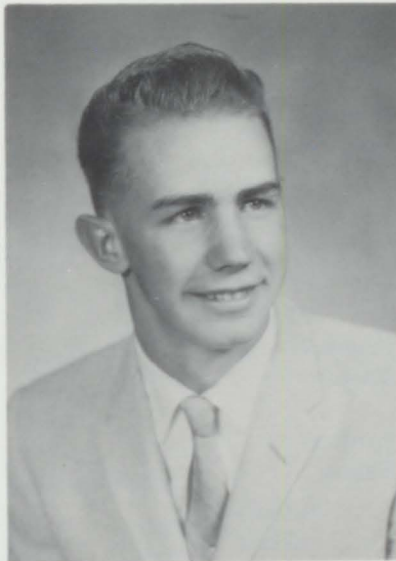
MERLYN SOMMERVOLD

He may not like his math, but he knows his figures.  
F.F.A. 1-4, Parliamentarian 4, Boys Glee 1-3, Chorus 1-4, Class President 3, Dakota 1-4, Cubette 1-3.



DAVID SWANSON

Work fascinates me, I can sit and watch it for hours.  
F.F.A. 1-4, Sentinel 4.



VERDELL SWANSON

They say he was once caught studying.  
F.F.A. 1-4.



GAYLORD THORMODSGARD

Love is too simple a game for intelligent men to indulge in.  
Football 3-4, Cubette 3, F.F.A. 1-4, Reporter 3, President 4, Junior Play, Senior Play.



Secretary-Linda Trudeau; Treasurer-Claudia Hammerstrom; President - Susan St. Pierre; Vice-President-Geraldine Holthe.

# JUNIOR CLASS



James Abrahamson

Gracia Bergstrom



Franklin Cooper

Winston Edson



Glenice Ekren

Tom Engebretson



Diane Fickbohm

Linden Fickbohm



Marlene Groom

Claudia Hammerstrom



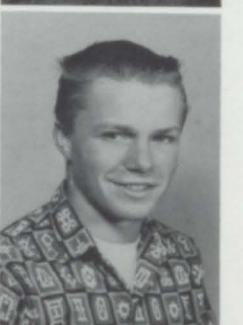
Geraldine Holthe

James Hongslo



Don Larsen

Mark Leafstedt



Mary Ludwig

Lloyd Lundberg



Jim McKee

Sherran McKellips



Kathy  
Moberg  
  
Eldean  
Montgomery



Darrel  
Sogn  
  
Carole  
Solbue



Bud  
Naeve  
  
Steven  
Peterson



Carol  
Stene  
  
Dennis  
Stene



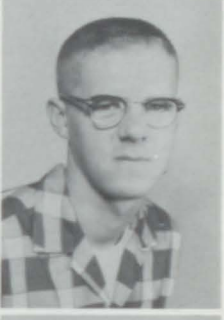
Larry  
Pilla  
  
Bill  
Rabey



DelRay  
Stephens  
  
Neil  
Thormodsgard



Melvin  
Ronning  
  
Beverly  
Rusten



Linda  
Trudeau  
  
Calvin  
Waddel



Susan  
St. Pierre  
  
Pat  
Schumacher



Clayton  
Welch  
  
Clark  
Wells



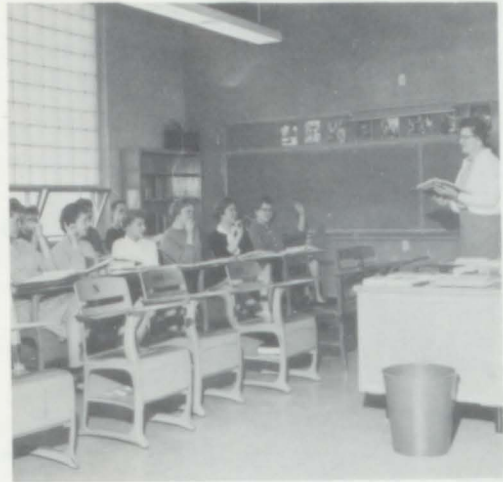
Dick  
Siemers  
  
Wayne  
Siemers



Betty  
Williams  
  
Lynda  
Winqvist



President; Larry Abrahamson: Vice-President; Kathleen Holthe: Secretary; Helen Anderson: Treasurer; Glenda Treiber.



It must have been an easy question!

## SOPHOMORE CLASS



Larry  
Abrahamson



Helen  
Anderson



Arlien  
Beeler



Edith  
Danielson



Betty  
Dobberstein



Jerome  
Erickson



Julie  
Ericson



Keith  
Ericson



Barbara  
Hagen



Renee  
Harders



Glenda Henry  
Kathleen Holthe



David St. Pierre  
Vernon Sands



Marvin Holthe  
John Isakson



Myrna Solberg  
Opal Stene



Karen Jurgenson  
Alona Keiser



Vivian Swanson  
Charles Tiltrum



Jerome Keiser  
Barbara Lykken



Richard Trandahl  
Glenda Treiber



Gary Peterson  
Gene Peterson



Tom Tucker  
Thomas Turner



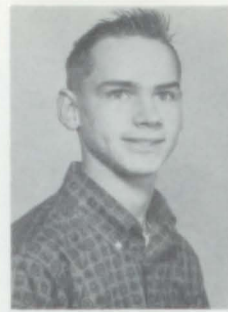
Gordon Powell  
Doreen Ronning



Susan Westin  
Sharon Westling



President-Curtis Abrahamson; Vice-President-Marlys Quinn; Treasurer-Ilene Siemers; Secretary-Pat Doty.



Leonard Elving



Clarie Fickbohm



David Groom



James Heiman



Alan Abraham

# FRESHMEN CLASS



Loren Jacobson



Judy Johnson



Curtis Abrahamson



Loren Anderson



David Kiewel



JoAnne Kratochvil



Cathleen Campbell



Marlyn Dietrich



Mildred Lundberg



Linda Lykken



Pat Doty



Bette Draves



Kathy McKellips



Janene Mollet





Alberta  
Nelson

Jerome  
Ostlund

Marlys  
Sogn

Wendell  
Solberg



Russel  
Paulson

Kay  
Peterson

Arvid  
Sommervold

Dallas  
Stene



Rodney  
Peterson

Lynn  
Pilla

Vicki  
Stubbs

Sandra  
Swenson



Marlys  
Quinn

Linda  
Roduner

Eilene  
Tiltrum

Kathy  
Thormodsgard



Elaine  
Rowley

Douglas  
Sandvall

Paul  
Thormodsgard

Cynthia  
Trudeau



Ilene  
Siemers

William  
Siemers

Janis  
Westin

Norma  
Williams



# SEVENTH AND EIGHTH GRADES



ROW ONE: D. Keiser, C. Broline, G. Hovdenes, C. Campbell, R. Hendricks, B. Ellingson, D. Anderson, Mrs. Gordon. ROW TWO: B. McKellips, J. Westin, B. Westling, A. Dobberstein, G. Hongslo, E. Lapour, M. St. Pierre, D. Parsons.

# FIFTH AND SIXTH GRADES



ROW ONE: R. Keiser, L. Anderson, V. Keiser, R. Fickbohm, B. Elving, B. Wahl, J. Trudeau, D. Fickbohm. ROW TWO: A. Trudeau, R. Peterson, M. Hendricks, A. Powell, M. Bum, S. Peterson, M. Solberg, R. Trandahl, Mrs. McGuire. ROW THREE: D. Hovdenes, T. Nilson, S. Johnson, M. Pederson, M. Westin, K. Naeve, G. Numsen, C. Campbell, J. St. Pierre. NOT PICTURED: C. Stubbs, D. Quinn.

# THIRD AND FOURTH GRADE



ROW ONE: J. Fickbohm, R. Anderson, C. Ellingsen, J. Trudeau, J. Larson, S. Hebert, C. Westin, M. Trudeau, T. Stubbs. ROW TWO: B. Nilson, D. Fickbohm, D. Hebert, C. Campbell, M. Day, M. Numsen, Z. Rabey, L. Hansen, R. Hovdeness, K. Hovdeness, TEACHER: Mrs. Earll

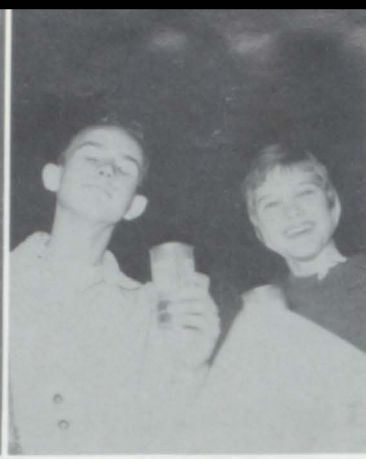
# FIRST AND SECOND GRADE



ROW ONE: J. Anderson, W. Stubbs, J. Thomas, B. Johnson, L. Anderson, M. Anderson, S. Wahl, R. Jurgenson, L. Ellingson, M. Keiser. ROW TWO: P. Peterson, N. Hammit, K. Severson, D. Johnson, G. McKellips, C. Sundstrom, D. Pederson, G. Kruse, L. Peterson. TEACHER: Mrs. Newberg.



Hippety hop!



Aren't we daring!



He saw a ghost.



Stop it, boys!



Future Homemakers?



Ain't she sweet!



A thriving buisness.



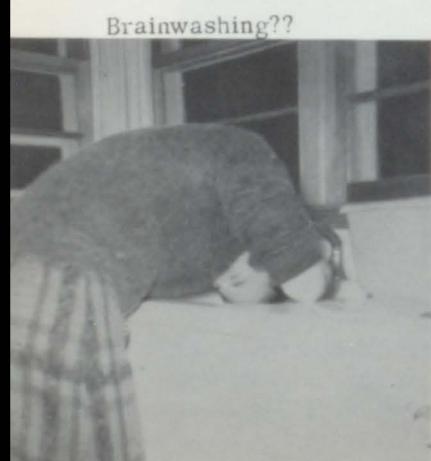
Steve "trying" to sew!.



??Togetherness??



Steve's riding high!



Brainwashing??

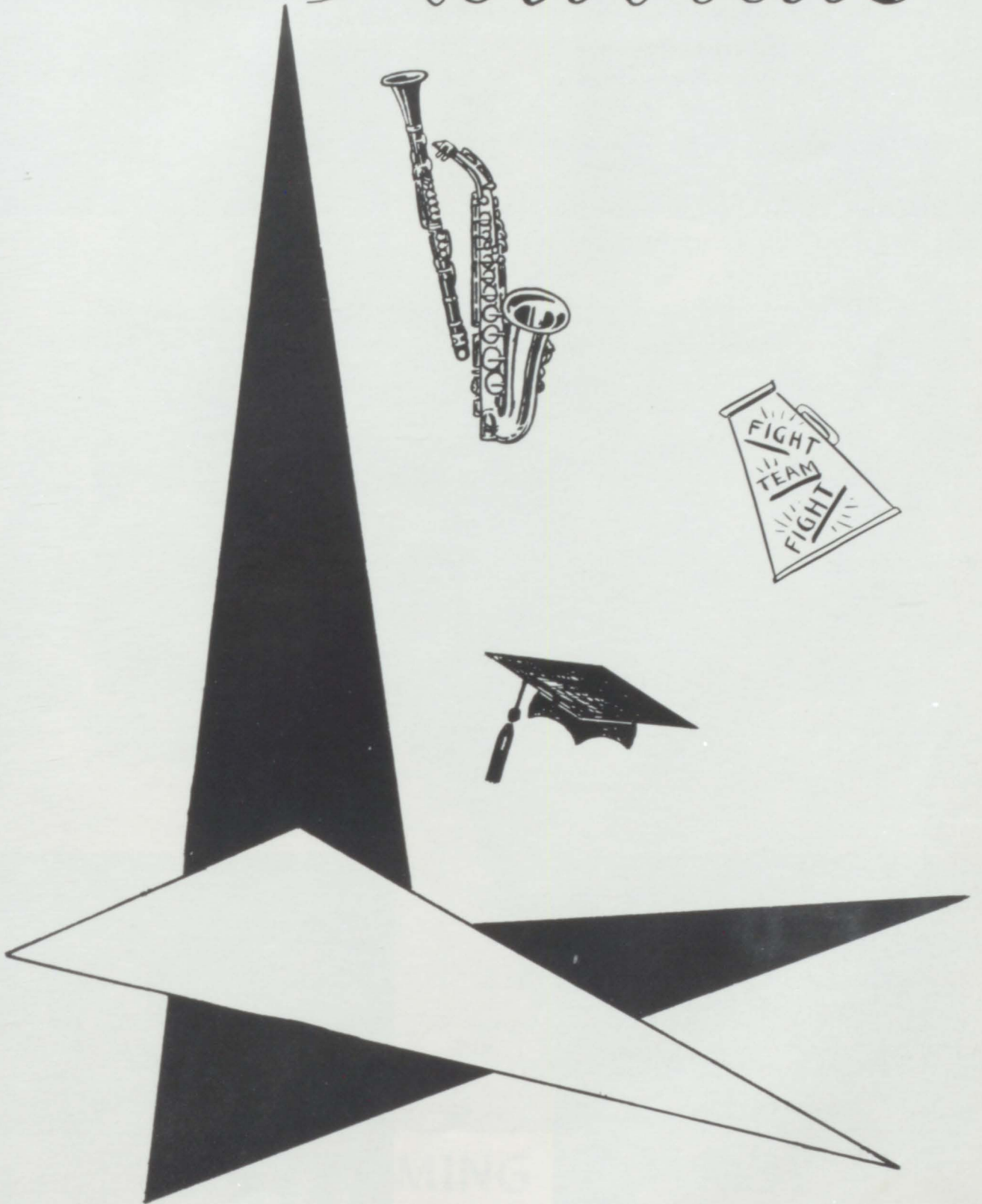


Who's the strongest? Let me out of here!!



Save some for me!

# Activities





CROWNING OUR HOMECOMING KING AND QUEEN



ROW ONE: J.Thomas, R.Jurgenson, D.Johnson, G.McKellips. ROW TWO: I.Siemers, K.Lykken, M.Evjen, P.Doty, G.Holthe, J.Ericson. ROW THREE: C.Tiltrum, J.Hong-slo, J.Satter, C.Abrahamson, J.Clementson, G.Kratochvil.



CUBS IN ORBIT



WISHING FOR VICTORY



# HOMECOMING ROYALTY

QUEEN KAREN LYKKEN AND KING JOHN SATTER

# DECLAMATION



ROW ONE: Mrs. Aaen, B. Peterson, M. Solberg, K. Moberg, G. Henry, B. Rusten, G. Bergstrom, M. Lundberg, V. Stubbs. ROW TWO: M. Ludwig, M. Day, L. Pilla, K. Peterson, C. Lundberg, E. Rowley, A. Nelson, Mrs. Marble. ROW THREE: O. Stene, M. Huebner, D. Fickbohm, S. Ericson, G. Ekren, J. Beeler, K. McKellips.



Beverly Peterson was the first place winner at the district contest.

Twenty girls and two boys participated in declamation work. They were directed by Mrs. Marble and Mrs. Aaen. On October 25, the local contest was held in the high school gymnasium. The winners were as follows: Steven Ericson, oratory; Gracia Bergstrom, poetry; Beverly Peterson, humorous; and Carol Lundberg, dramatic. The district contest was held on November 10, with Beverly placing superior, Gracia excellent, and Carol and Steven good. At the regional contest on November 14, Beverly received an excellent rating.





ROW ONE: Mrs. Aaen, advisor; B. Hagen, L. Winquist, E. Danielson, C. Hammerstrom, I. Siemers, B. Rusten, J. Kratochvil, J. Johnson. ROW TWO: C. Dean, M. Day, G. Ekren, H. Anderson, E. Tiltrum, I. Siemers, L. Peterson, G. Treiber.

## LIBRARY

Our sixteen librarians have worked hard this year checking books and magazines in and out. The head librarian, Ione Siemers, was the assistant to Mrs. Aaen, the advisor, in keeping the library in good order and running smoothly. Next year Claudia Hammerstrom, the assistant head librarian, will take over Ione's work. The president, Beverly Rusten, and vice-president, Marietta Day, were in charge of the librarian's meetings. Secretary-treasurer Lois Peterson took care of the dues received on over-due books. As a whole, the librarians feel that they have had an educational and enjoyable experience in the library this past year.



Library Scenes



SEATED: Mr. Herbold, Advisor, J. Abrahamson, Jr. Art Editor; M. Huebner, Art Editor; S. Doty, Editor; R. Siemers, Jr. Editor; J. Satter, Business Manager; L. Trudeau, Jr. Business Manager. ROW ONE: E. Rusten, G. Bergstrom, K. Moberg, S. St.Pierre, M. Day, D. Ronning, G. Treiber, B. Dobberstein, J. Johnson. ROW TWO: S. Ericson, C. Hammerstrom, G. Kratochvil, L. Abrahamson, C. Tiltrum, J. Clementson, E. Tiltrum, P. Doty, K. Lykken, N. Ronell.



## CUBETTE

Editor, Sharon Doty and Business Manager, John Satter, solving one of the many annual problems.

Art Editor, MarCella Huebner and Larry Abrahamson designing a division page.

Cutting and pasting is a general routine.





SEATED: Mr. Crawford, Advisor; B. Peterson, Feature Editor; M. Evjen, Head Reporter; C. Lundberg, Editor; I. Siemers, Assistant Editor; L. Peterson, Art Editor; J. Clementson, Sports Editor; K. Lykken, Business Manager. ROW ONE: J. Kratochvil, B. Rusten, K. Moberg, G. Ekren, L. Winquist, B. Hagen. ROW TWO: G. Bergstrom, D. Larsen, J. Ericson, K. Holthe, M. Day, C. Dean, L. Lykken, S. McKellips, M. Lundberg. ROW THREE: L. Pilla, C. Abrahamson, M. Ronning, J. Isakson, S. Ericson, N. Ronell, E. Tiltrum, H. Anderson, S. St. Pierre.

## DAKOTA

Mr. Crawford giving advice to puzzled staff members.

Beverly Peterson, Ione Siemers, and Lois Peterson writing stories for the Dakota.

Beverly and Lois Peterson doing the art work on the stencils.



# F.H.A.



SEATED: S. St.Pierre, parliamentarian; K. Lykken, vice-president; I. Siemers, secretary; H. Anderson, historian; K. Moberg, president; S. McKellips, treasurer; G. Holthe, reporter; K. Holthe, music leader; Mrs. Ericson, advisor. ROW ONE: C. Trudeau, S. Swenson, J. Johnson, J. Kratochvil, I. Siemers, N. Williams, K. Anderson, R. Harders, L. Winquist, B. Williams, B. Peterson, E. Rowley, K. Thormodsgard, V. Swanson, J. Ericson, B. Hagen. ROW TWO: E. Danielson, G. Hartman, K. Peterson, M. Groon, J. Mollet, B. Dobberstein, B. Draves, S. Westin, L. Roduner, J. Westin, A. Beeler, M. Ludwig, L. Lykken, M. Sogn, M. Lundberg, V. Stubbs. ROW THREE: C. Fickbohm, G. Treiber, A. Nelson, K. McKellips, P. Doty, C. Lundberg, J. Beeler, M. Quinn, M. Evjen, S. Doty, K. Jurgenson, A. Keiser, L. Trudeau, P. Schumacher. ROW FOUR: B. Rusten, G. Ekren, D. Ronning, S. Westling, M. Day, L. Peterson, G. Ekren, O. Stene, M. Huebner, E. Tiltrum, C. Stene, B. Lykken, C. Hammerstrom, C. Solbue, M. Solberg, G. Bergstrom.



Honorary Members and President



"Builders of Homes"



Guest Speaker and President



ROW ONE: D. Swanson, Sentinel; C. Sandvall, Reporter; C. Gunnare, Treasurer; G. Thormodsgard, President; J. Satter, Vice-President; M. Sommervold, Parliamentarian; G. Kratochvil, Secretary; Mr. Dobberstein, Advisor. ROW TWO: L. Anderson, A. Sommervold, W. Solberg, D. Kiewel, G. Peterson, L. Lundberg, R. Paulson, D. Groon. ROW THREE: E. Montgomery, M. Holthe, V. Sands, A. Abrahamson, J. Erickson, C. Wells, D. Sogn, D. Stene, J. Heiman. ROW FOUR: T. Turner, K. Ericson, L. Pilla, F. Cooper, R. Peterson, V. Swanson, C. Peterson, P. Thormodsgard. ROW FIVE: C. Tiltrum, J. Isakson, J. Keiser, R. Holthe, J. McKee, G. Schoellerman, C. Abrahamson, G. Hendricks.

## F.F.A.

The local FFA chapter has a membership of forty-one members. At the beginning of each school year a Program of Work is drawn up outlining the activities for the year. Some of the highlights include the Father and Son Banquet, activities for FFA week in February and participation in the State FFA Judging contest and convention at Brookings in April.



Scenes from FFA Banquet



Oh! What a beautiful bug.



The Cas



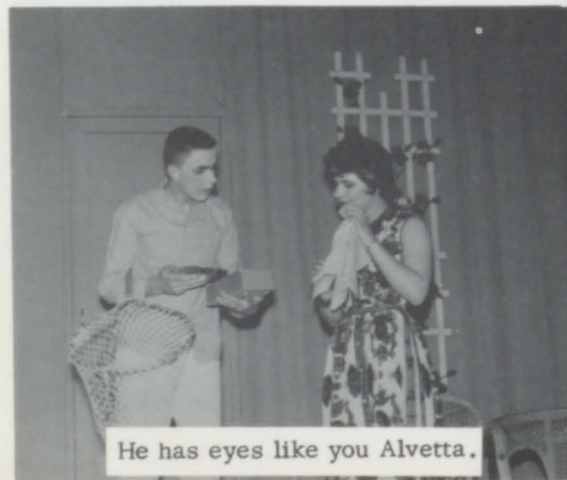
It's just ketchup!

Professor Partridge.....Bud Naeve  
 Edward Homey.....Jim Hongslo  
 Ned Fuller.....Wayne Siemers  
 Guisseppe.....Don Larsen  
 Jonathan Sedgewick.....Jim Abrahamson  
 Alvetta Wingert.....Claudia Hammerstrom  
 Danny Homey.....Dick Siemers  
 Joe Reade.....Mark Leafstedt  
 Martha Homey.....Kathy Moberg  
 Bridget.....Glenice Ekren  
 Diane Melville.....Carole Solbue  
 Juanita Murray.....Sherry McKellips  
 Carol Homey.....Susan St. Pierre  
 Patty Homey.....Geraldine Holthe  
 Mary Jane Graham.....Lynda Winquist

# JUNIORS PRESENT QUIET EVERYBODY



But what about my garden?



He has eyes like you Alvetta.



Juanita's Party



The Cast



Get me out of here!!

Lulu Grumbine.....	MarCella Huebner
Janis Brown.....	Karen Lykken
Judy Mills.....	Carol Lundberg
Miss Chisle.....	Beverly Peterson
Mrs. Matchett.....	Sharon Doty
Barbara Clancy.....	Ione Siemers
Harry Cooper.....	James Clementson
Jackie Trent.....	Gary Kratochvil
Arlin Abbott.....	Duane Fickbohm
Mr. Agnew.....	Steven Ericson
Spaceman.....	Gaylord Thormodsgard

# SENIORS PRESENT A ROCKET IN HIS POCKET



We'll all be killed!



Five, four, three, two, one, zero, ---CONTACT.



You're fired!!!



SEATED: J. Ericson, Secretary-Treasurer; M. Evjen, President; L. Trudeau, Vice-President. ROW ONE: J. Johnson, J. Kratochvil, Il Siemers, N. Williams, K. Anderson, R. Harders, B. Peterson, V. Stubbs, E. Rowley, L. Winquist, B. Williams, G. Holthe, B. Rusten, B. Hagen. ROW TWO: C. Trudeau, S. Swenson, P. Doty, K. McKellips, J. Mollet, B. Dobberstein, D. Ronning, S. McKellips, M. Quinn, L. Roduner, J. Westin, M. Ludwig, L. Lykken, M. Lundberg, K. Thormodsgard, C. Fickbohm, ROW THREE: G. Henry, C. Dean, G. Treiber, E. Danielson, M. Groom, C. Lundberg, S. Westin, P. Schumacher, D. Fickbohm, S. St.Pierre, M. Sogn, K. Holthe, K. Jurgenson, A. Keiser, G. Bergstrom ROW FOUR: A. Nelson, S. Westling, M. Day, L. Peterson, K. Lykken, I. Siemers, G. Ekren, G. Stene, H. Anderson, E. Tiltrum, B. Lykken, C. Stene, C. Hammerstrom, C. Solbue, M. Solberg, K. Moberg.



Cheering the Cubs on to Victory.

## PEP CLUB

The Pep Club backed the athletic teams at all of the games. They had a bake sale, sold pencils, had charge of the coat check, and sold candy to raise money for the "A" team cheerleader's uniforms and to earn their pins. At the end of the year, they presented the school with a large pennant.





## BRASS ENSEMBLE

Glenice Ekren  
Kathleen Holthe  
Curtis Sandvall  
Karen Lykken  
Colleen Dean

## GIRLS' SEXTET

Julie Ericson  
Beverly Peterson  
Janene Mollet  
Marietta Day  
Susan St. Pierre  
Barbara Hagen



## CLARINET QUARTET

Marietta Day  
Sherran McKellips  
Barbara Hagen  
Sharon Doty



ROW ONE: M. Day, S. McKellips, B. Dobberstein, H. Anderson. ROW TWO: L. Peterson, G. Holthe, M. St.Pierre, S. Doty, B. Hagen, K. McKellips, O. Stene. ROW THREE: V. Stubbs, J. Westin, D. Parsons, M. Dietrich, J. Mollet, P. Doty. ROW FOUR: J. Beeler, J. Clementson, G. Kratochvil, M. Huebner, B. Rusten, B. Lykken.

## BAND



## MARCHING BAND



ROW ONE: B. McKellips, S. Swenson, K. Lykken, C. Dean. ROW TWO: B. Peterson, M. Groom, G. Ekren, J. Ericson, G. Bergstrom, L. Danielson. ROW THREE: G. Treiber, D. Ronning, V. Swanson, S. St. Pierre, K. Holthe, D. Sandvall, R. Trandahl, L. Winqvist, D. Fickbohm, E. Tiltrum, K. Jurgenson, D. Siemers, N. Ronell. ROW FOUR: C. Gunnare, C. Sandvall, STANDING: Mr. Swanson, Director.

Piano Soloist: Glenda Henry

Band Majorette: Susan St. Pierre



PEP

BAND



# GIRLS' GLEE CLUB



ROW ONE: J. Johnson, J. Kratochvil, K. Peterson, I. Siemers, N. Williams, K. Anderson, R. Harders, K. Thormodsgard, E. Rowley, B. Peterson, D. Ronning, L. Winquist, B. Williams, B. Hagen, J. Ericson, V. Swanson, G. Holthe. ROW TWO: C. Trudeau, S. Swenson, K. McKellips, G. Hartman, D. Fickbohm, J. Mollet, B. Dobberstein, B. Draves, S. McKellips, M. Quinn, L. Lykken, J. Westin, A. Beeler, M. Ludwig, V. Stubbs, M. Lundberg, C. Fickbohm. ROW THREE: Mr. Swanson, Director, C. Lundberg, G. Henry, A. Nelson, P. Doty, C. Dean, G. Treiber, E. Danielson, M. Groon, S. Westin, M. Sogn, S. St. Pierre, K. Holthe, K. Jurgenson, A. Keiser, M. Evjen, L. Trudeau, P. Schumacher, C. Campbell. ROW FOUR: B. Rusten, K. Moberg, S. Westling, I. Siemers, J. Beeler, G. Ekren, K. Lykken, O. Stene, S. Doty, H. Anderson, E. Tiltrum, B. Lykken, C. Stene, C. Hammerstrom, C. Solbue, M. Solberg, G. Bergstrom.

## TRUMPET TRIO



J. Ericson, C. Dean, K. Lykken.

The music department under the direction of Mr. Swanson worked hard preparing selections for the annual contest in Vermillion and for the local concert. The contest was held on Saturday, April 8, 1961, with the band, mixed chorus, and girls' glee club receiving excellent ratings. The concert was held on Tuesday, April 25, 1961, in the high school gymnasium.

# MIXED CHORUS



ROW ONE: V. Swanson, B. Hagen, M. Groon, M. Sogn, E. Rowley, B. Williams, L. Wynquist, B. Peterson, J. Mollet, K. Lykken, C. Hammerstrom, K. Thormodsgard, G. Bergstrom, B. Rusten, G. Holthe, J. Ericson. ROW TWO: A. Beeler, S. McKellips, S. St. Pierre, B. Dobberstein, M. Quinn, O. Stene, G. Ekren, J. Beeler, H. Anderson, E. Tiltrum, S. Doty, L. Trudeau, K. Moberg, G. Henry, M. Day, C. Solbue. ROW THREE: H. Swanson, M. Dietrich, R. Trandahl, D. Siemers, M. Leafstedt, K. Ericson, C. Welch, C. Abrahamson, C. Gunnare, D. Sandvall, J. Ostlund. ROW FOUR: J. Ericson, S. Peterson, L. Fickbohm, J. Abrahamson, D. Stene, C. Wadell, S. Ericson, J. Hongslo, J. Satter, L. Danielson, J. Clementson, M. Ronning, D. Larsen, M. Holthe. NOT PICTURED: L. Elving, J. Keiser, T. Engebretson.

## ACCOMPANISTS

## SOLOISTS



Marietta Day and Kathleen Holthe



Julie Ericson, contralto; Lynda Winquist, mezzo-soprano; Janene Mollet, soprano; Marlyn Dietrich, baritone; Steven Ericson, bass.

S  
W  
E  
E  
T  
  
H  
E  
A  
R  
T



Marietta Day, Colleen Dean, Queen Ione Siemers, Marvelyn Evjen, Sharon Doty.



THE CROWNING OF OUR QUEEN



THE GRAND MARCH

# JUNIOR - SENIOR PROM



# NOT FINISHED JUST BEGUN



## CLASS OF '61 GRADUATES

Colors: Red and White

Flower: Red Rose

### BACCALAUREATE

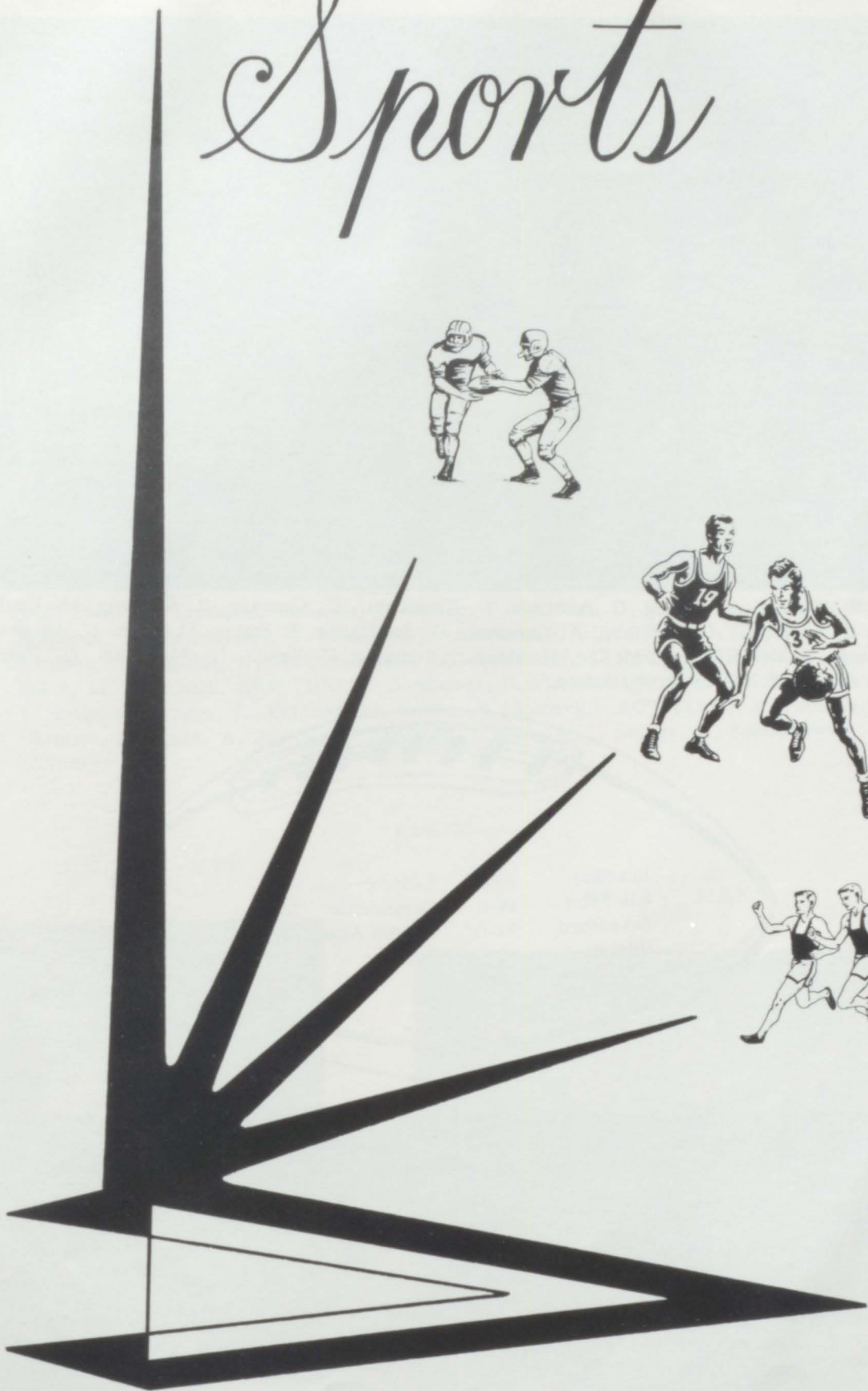
Processional.....	Sherran McKellips
Invocation.....	Rev. Rendahl
Hymn.....	"Come Thou Almighty King"
Scripture and Prayer.....	Rev. Rendahl
Girls Glee Club.....	"Climb Every Mountain"
Mixed Chorus.....	"Today There is Ringing" "You'll Never Walk Alone"
Sermon.....	"A Time Like This".....Rev. Giddings
	"The Lord is My Light and My Salvation"
	Beverly Peterson
Benediction.....	Rev. Rendahl
Recessional.....	Sherran McKellips

### COMMENCEMENT

Processional.....	A.H.S. Band
Invocation.....	Rev. Giddings
Salutatorian.....	Sharon Doty
A.H.S. Band.....	"Hall of Fame" "Air and March"
Valedictorian.....	Colleen Dean
Presentation of Awards....	Prin. E. R. Dobberstein
Presentation of Speaker.....	Supt. W. B. Herbold
Speaker... "Geometry of Success"...	LeRoy Nelson
"Trust".....	Steven Ericson
Presentation of Class.....	Supt. W. B. Herbold
Presentation of Diplomas.....	Vere Larsen
Benediction.....	Rev. Giddings
Recessional.....	A.H.S. Band



# Sports



# FOOTBALL



ROW ONE: T. Tucker, L. Elving, G. Peterson, G. Kratochvil, C. Gunnare, R. Siemers, M. Leafstedt.  
 ROW TWO: D. Stene, C. Abrahamson, A. Abraham, D. St. Pierre, J. Satter, D. Sogn, L. Abrahamson,  
 J. Abrahamson. ROW THREE: J. McKee, D. Stene, J. Hongslo, C. Welch, L. Fickbohm, G. Thormods-  
 gard, C. Waddell, D. Stephens, W. Edson.

SCORES			
Brandon	19-0	Lennox	20-0
Elk Point	14-0	Centerville	33-0
Beresford	27-0	Canton Acad.	35-0
Hurley	0-6	Parker	39-12



# TRACK



ROW ONE: R. Trandahl, manager; L. Elving, C. Tiltrum, D. St. Pierre, S. Peterson, D. Stephens, L. Abrahamson, G. Peterson, J. Smith-coach. ROW TWO: D. Siemers, C. Abrahamson, C. Waddell, N. Thormodsgard, J. Abrahamson, J. McKee, S. Ericson, L. Fickbohm, M. Leafstedt. ROW THREE: D. Kiewel, P. Thormodsgard, C. Welch, W. Edson, J. Hongslo, D. Sogn, K. Ericson, M. Holthe, W. Solberg. ROW FOUR: R. Paulson, M. Dietrich, D. Stene, A. Abraham, J. Heiman, J. Isakson, J. Keiser, A. Sommervold, W. Siemers.

## WEIGHT MEN

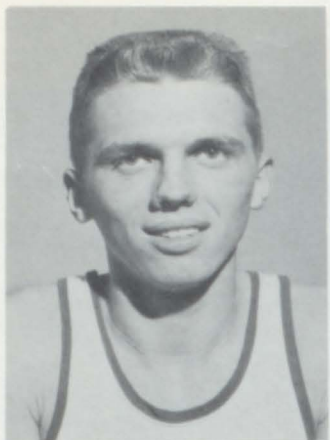


Kneeling: J. Abrahamson, J. McKee.  
Standing: L. Fickbohm, C. Welch, C. Abrahamson.

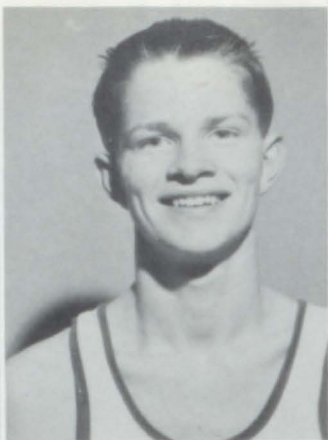
## RELAY MEN



Row one: C. Tiltrum, L. Abrahamson, L. Elving. Row two: N. Thormodsgard, D. St. Pierre, J. Abrahamson, D. Stephens, S. Peterson.



Winston Edson



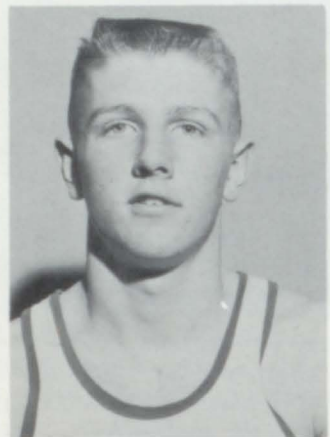
Jim Clementson



DelRay Stephens



Gary Kratochvil

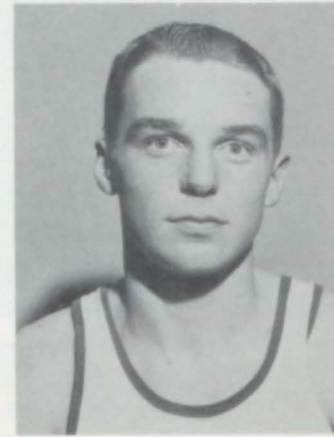


Steven Ericson

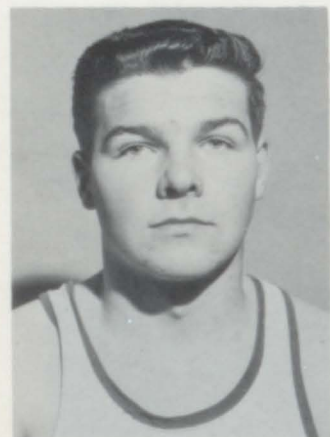
COACH



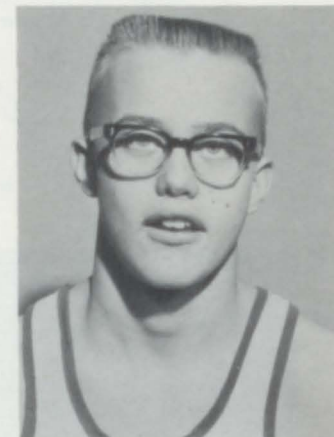
John T. Smith



John Satter



Jim Abrahamson



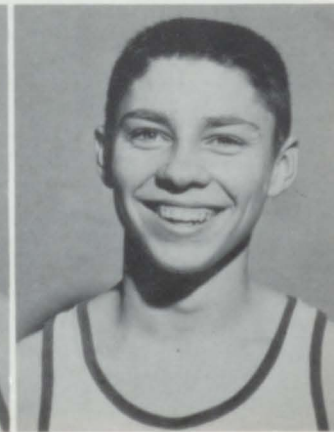
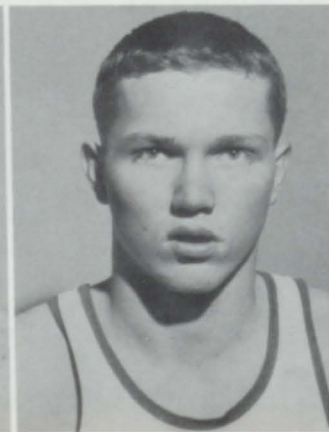
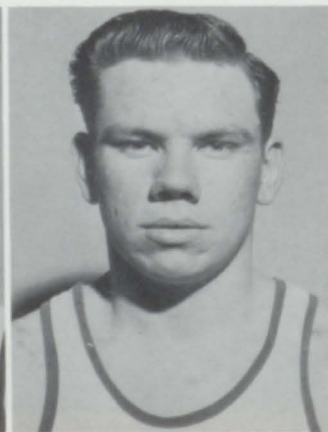
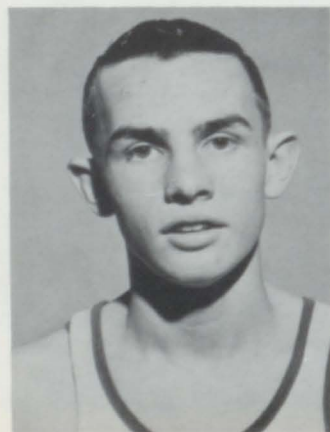
Jim Hongslo

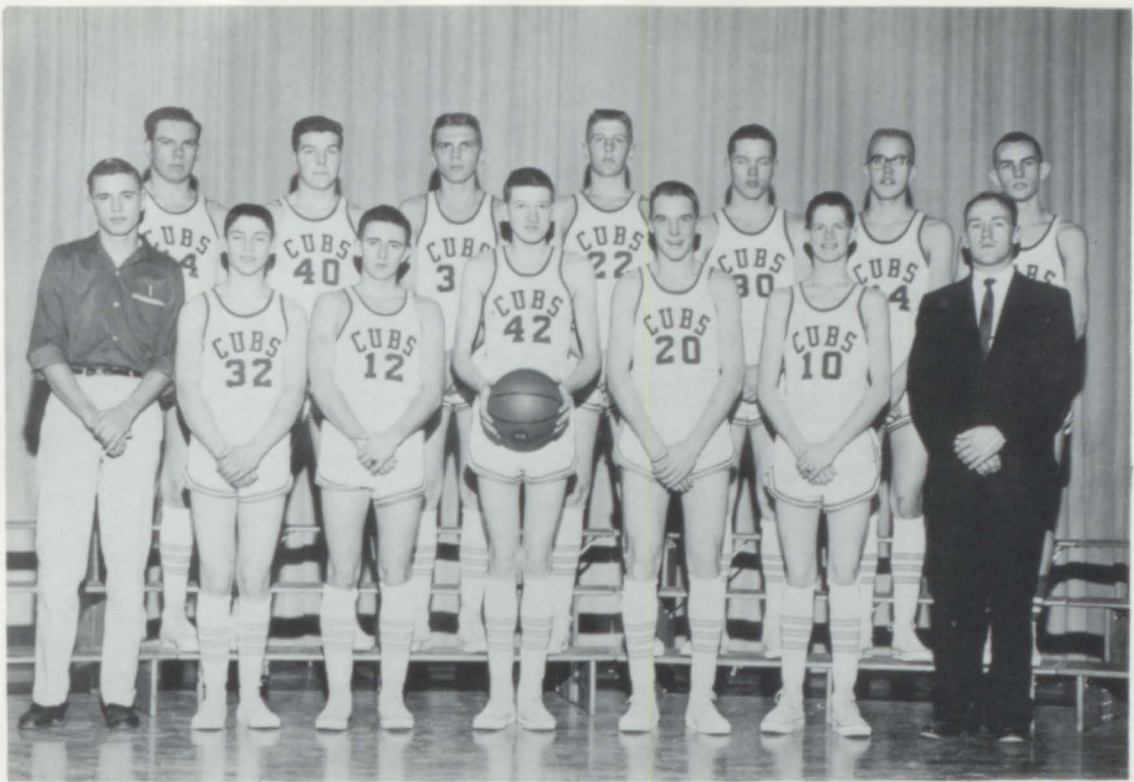
David St. Pierre

Linden Fickbohm

Dennis Stene

Dick Siemers





ROW ONE: S. Peterson, Manager; D. Siemers, G. Kratochvil, D. Stephens, J. Satter, J. Clementson, Coach Smith. ROW TWO: L. Fickbohm, J. Abrahamson, W. Edson, S. Ericson, D. Stene, J. Hongslo, D. St.Pierre.

## "A" TEAM

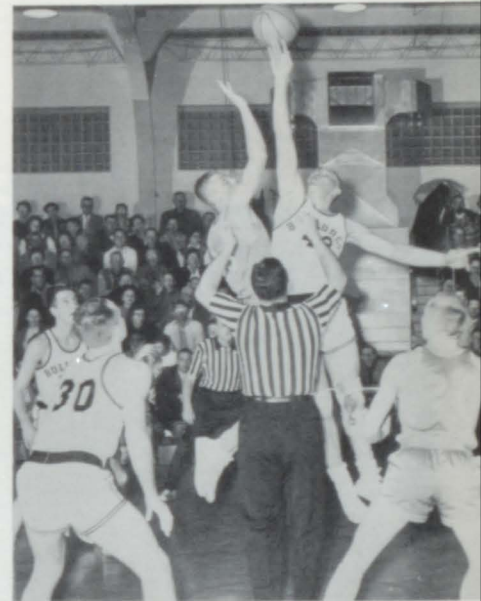
Opponent We-They

Hudson	67--33
Hawarden	58--52
Chancellor	66--35
Jefferson	52--47
Hurley	48--54*
Beresford	37--43*
Westfield	59--41
Elk Point	52--54
Vermillion	54--42
Centerville	62--52*
Canton	52--51*
Centerville	49--59
Elk Point	58--54*
Lennox	57--55*
Irene	53--56
Canton Academy	49--43
Parker	45--46*
Worthing	46--43
Hurley	56--45**
Parker	66--53**
Lennox	50--33**
Dell Rapids	60--64***
Lyons	29--47***

\* Conference Games

\*\* District Tournaments

\*\*\* Regional Tournaments





FIRST ROW: Coach Smith, M. Dietrich, P. Thormodsgard, D. Stene, J. Heiman L. Elving, Manager: R. Trandahl. SECOND ROW: T. Tucker, C. Tiltrum, L. Abrahamson, C. Abrahamson, A. Abraham. NOT PICTURED: G. Peterson

## "B" TEAM



Opponent	We-They
Hudson	47-20
Hawarden	33-56
Chancellor	19-33
Jefferson	36-16
Hurley	30-25
Beresford	36-20
Westfield	27-19
Elk Point	22-19
Vermillion	38-41
Centerville	31-33
Canton	30-34
Centerville	27-37
Elk Point	40-32
Lennox	41-42
Faculty	42-39
Canton Academy	29-30
Parker	38-28
Worthing	52-36

The "B" team consisted of seven freshmen and five sophomores this year. They played 18 games with 10 wins and 8 losses. Two sophomores, Gene Peterson and Charles Tiltrum, were selected as the most valuable and the most improved players, respectively.

# A CLUB



Seated: Mr. Smith, W. Edson, Vice-president; J. Hongslo, secretary-treasurer; G. Kratochvil, president. ROW ONE: D. Siemers, C. Gunnare, L. Abrahamson, D. St.Pierre, J. Satter, S. Peterson, D. Sogn, J. Clementson, M. Leafstedt. ROW TWO: L. Fickbohm, D. Stene, C. Waddell, J. Abrahamson, C. Welch, J. McKee, D. Stephens, G. Thormodsgard.

# GRADE BASKETBALL



ROW ONE: R. Fickbohm, D. Anderson, R. Peterson, D. Keiser, V. Keiser, D. Fickbohm, Mr. Thuringer. ROW TWO: J. Trudeau, R. Trandahl, S. Peterson, M. Buom, M. Pederson, A. Trudeau, L. Anderson. ROW THREE: M. Solberg, G. Numsen, B. Westling, G. Hongslo, A. Dobberstein, D. Parsons, T. Nilson, J. St.Pierre.

# A-TEAM CHEERLEADERS

Susan Westin  
Karen Lykken  
Sharon Westling  
Gracia Bergstrom



The student body held the election of cheerleaders in the fall. Out of the eighteen girls who tried out, four were selected as "A" team cheerleaders and four as "B" team cheerleaders. Only one of the eight had been a cheerleader in previous years. This was the first time that Alcester has had "B" team cheerleaders in several years.

The cheerleaders worked hard preparing for pep meetings and leading yells at all of the games. This year they had the privilege of cheering the Cubs on to victory through the district tournaments and into the regional tournaments.



# B-TEAM CHEERLEADERS

Judy Johnson  
Cynthia Trudeau  
Pat Doty  
JoAnne Kratochvil



Following are those who have helped make this year's annual possible. Their donations have been greatly appreciated.

Alcester Locker Plant\*  
Alcester Union  
Anderson Elevator  
Anderson Garage\*  
Art's Service Station  
Aslesens\*  
Carrie's Cafe  
City of Alcester\*  
Continental Baking Co.\*  
Dr. C.E. Johnson  
Dr. L.H. Shoraga  
Emery's Recreation  
Farmers Union\*  
Great Plains Supply Co.  
Gustafson & Anderson Garage  
H & N\*  
Iowa Public Service\*  
Larsen Drug\*  
LaVonne's Beauty Shop\*  
Lincoln-Union Electric\*  
Moris' Grocery\*  
Nilson Funeral Home  
Nora Creamery  
O.G. Beck\*  
Paul's Produce  
Pete's Produce  
Shuck Brothers\*  
State Bank of Alcester\*  
Stroshane Hardware  
Stubbs' Barber Shop\*  
Swenson's Gamble Store  
Swenson's Grocery  
Terrace Park Dairy  
Tollinger's Studio\*  
Walt Polk  
Westin Radio-T.V.  
Wheeler & Anderson\*

\* Contributed \$10.00





Graduation is a time that every student looks forward to from the time that he enters highschool, and this is that time for the class of '61.

The annual staff would like to express their appreciation to all those who helped make this year-book possible.

