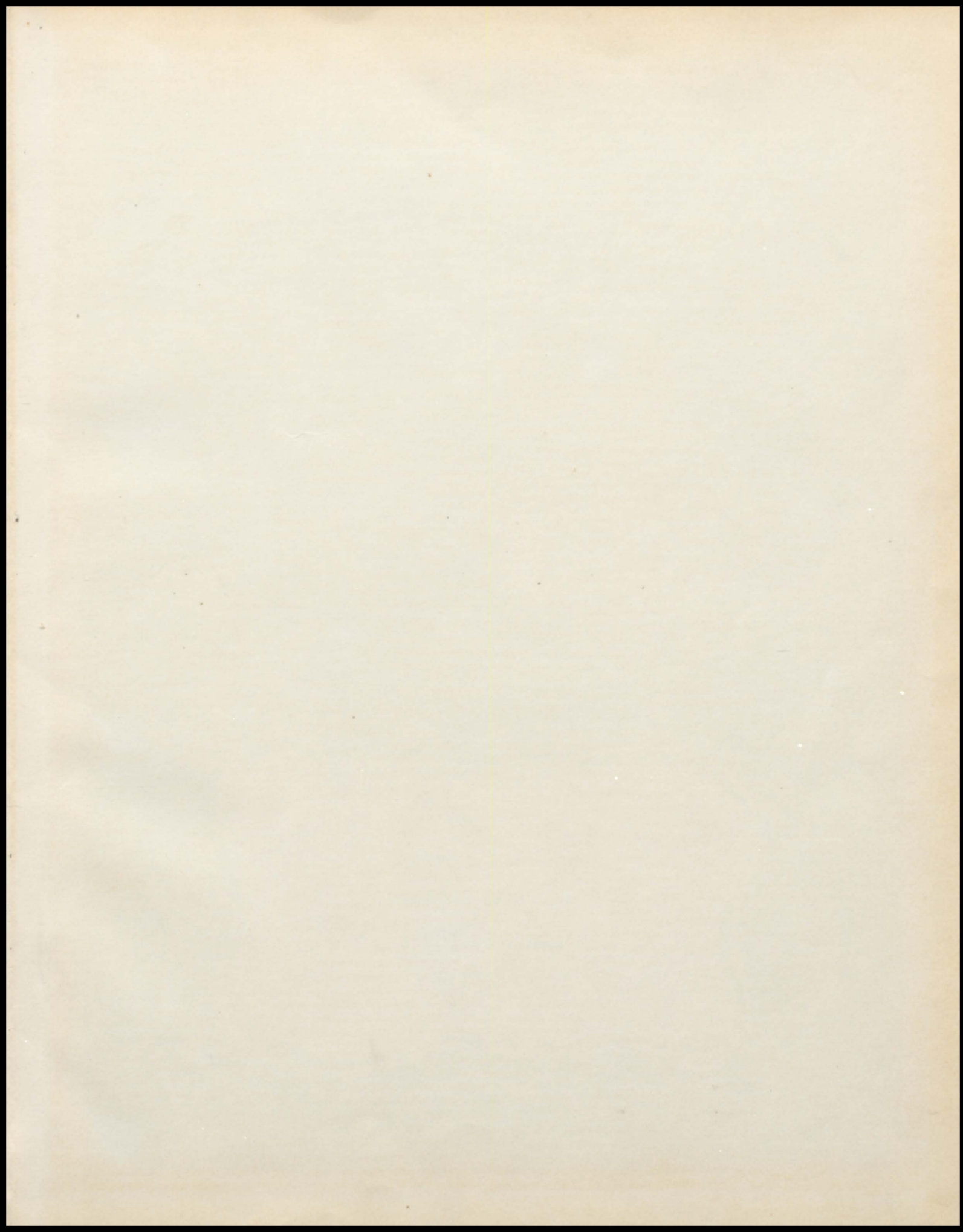
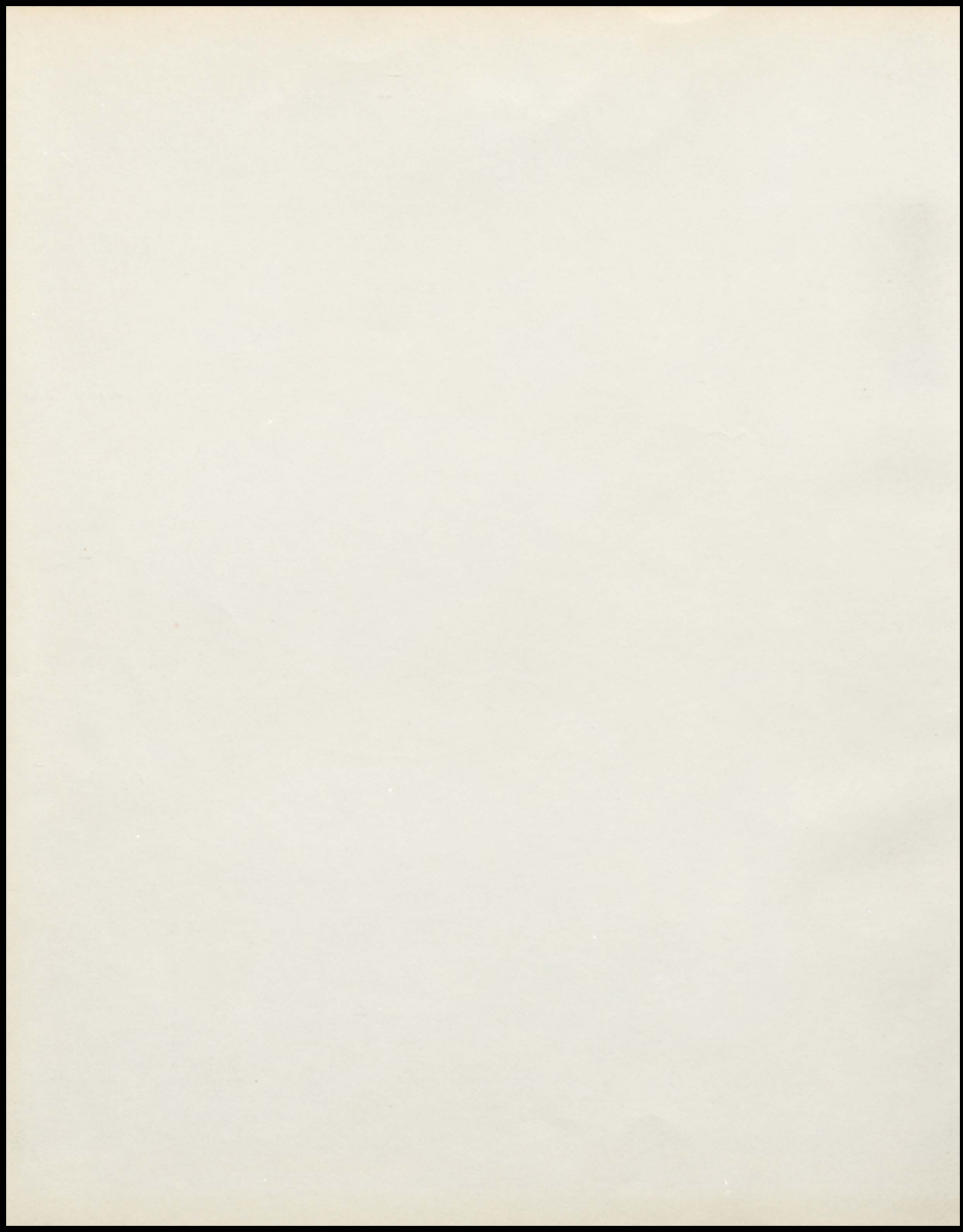


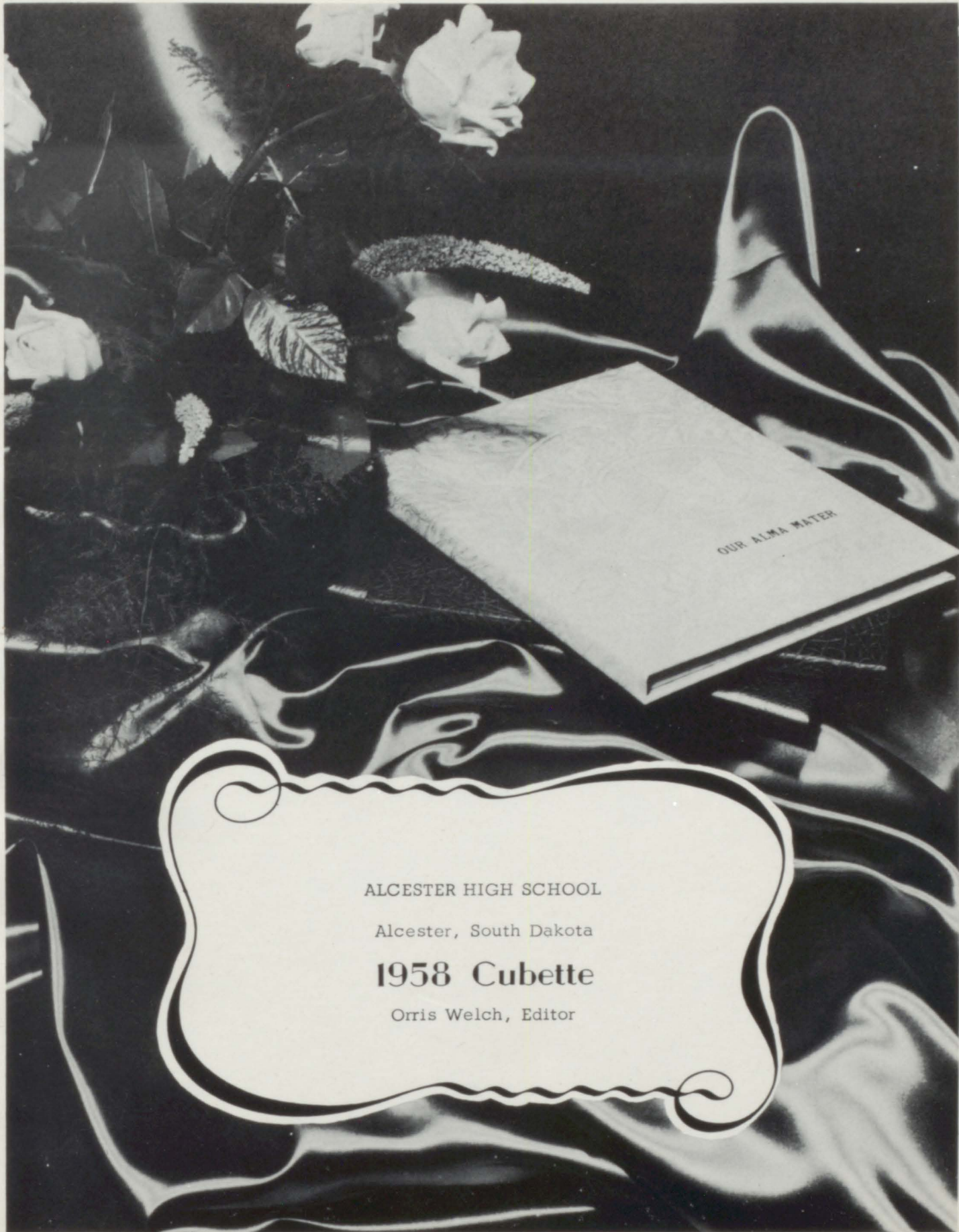
CUBETTE

1958





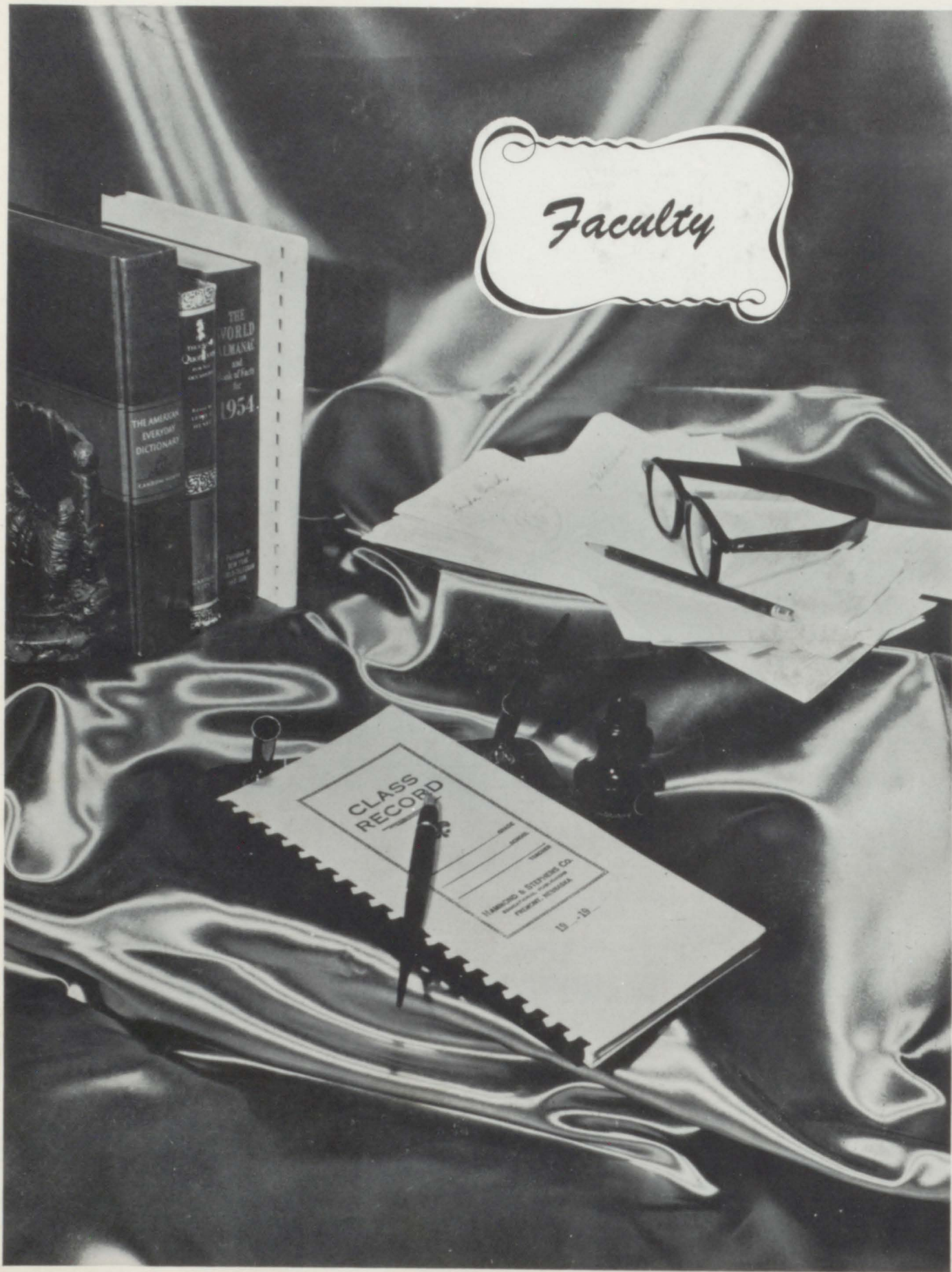




OUR ALMA MATER

ALCESTER HIGH SCHOOL  
Alcester, South Dakota  
**1958 Cubette**  
Orris Welch, Editor

# Faculty





C. J. NULTY  
M.A., U.S.D.  
B.S., U. of Iowa  
Superintendent



E. R. DOBBERSTEIN  
B.S., S.D.S.C.  
Principal  
Agriculture



GALE DETTMAN  
M. Music  
U. Texas, B. Music  
Northwestern U.  
Music



MICHEAL THOMAS  
B.S., Gen. Beadle  
Teachers College  
Math., Science  
Athletics



MRS. CLAIRE FINNIE  
B.A., Sioux Falls  
College  
English



MRS. CLARK BAIRD  
B.A., Dakota Wesleyan  
Commercial



IRL OAKS  
B.A., Yankton College  
Athletics  
Social Sciences



MRS. IVAN ERICSON  
B.S., S.D.S.C.  
Home Economics

## School Board



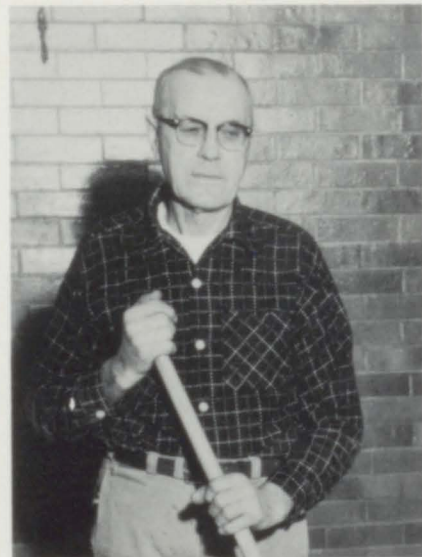
R. Anderson, J. Anderberg, L. Day, R. Johnson, V. Larsen, M. Westin

## Cooks



Mrs. Hammerstrom and Mrs. Shuck

## Janitor

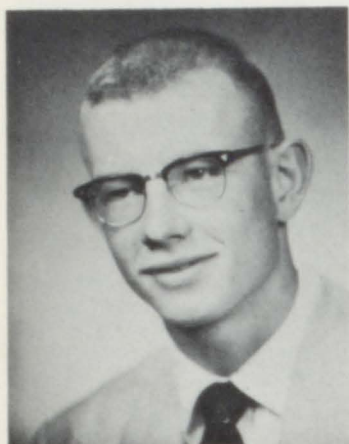


Oscar Newberg



*Graduates*





CURTIS ANDERBERG  
Chorus, 1-3; Student Body President,  
Basketball, 1-4; Track, 1,2; Senior  
Play, Football, 1-4.



LUCILLE ANDERSON  
Chorus, 1, 4; FHA, 1-4; Cubette,  
3, 4; Senior Play.



ROBERT ANDERSON  
FFA, 1-2; Football, 2-4; Basketball,  
1-4.



KERRY BARTLETT  
Chorus, 1-4; FFA, 1-2; Class Offi-  
cer, 1, 4; Track, 2, 4; Football,  
1-4; Homecoming King, Cubette,  
Officer; Student Council, 1-2;  
Junior and Senior Plays.



DENNIS DEAN  
Band, 1-4; Chorus, 2-4; FFA, 1;  
Football, 1-4; All State Band.



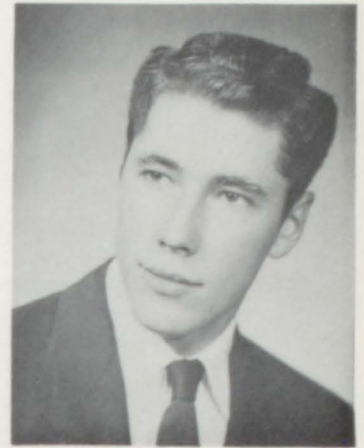
OWEN EIDSNESS  
Football, 1-4; Band, 1; Basketball  
Manager, 4; FFA, 1, 2; Junior and  
Senior Plays; Class Officer, 3, 4;  
Student Council, 2.



SHARON ERICSON  
Band, 1-4; Chorus, 1-4; FHA, 1-4;  
Class Officer, 3; Library, 1-4;  
Sweetheart Queen, Dakota, 1-4,  
Officer; Cheerleader, 1; Student  
Council, 4; Senior Play.



DORENE HANSEN  
Chorus, 1; FHA, 1-4.



CLAUDE HEBERT  
FFA, 1-4.



WAYNE JOHNSON  
FFA, 1-4; Class Officer, 2; Foot-  
ball, 1-4; Basketball, 1-4; Track,  
1, 4; Dakota, 4; Cubette, 4.



ROYCE LAPOUR  
FFA, 1-4; Chorus, 1, 2.



DOUGLAS LEAFSTEDT  
Chorus, 1, 2, 4; FFA, 1-3; Track, 1,  
2, 4; Football, 1-4; Basketball, 1-4;  
Dakota, 1-4, Officer; Cubette,  
Officer; Senior Play.



JANICE LIND

Band, 1-4; Chorus, 1, 4; FHA, 1-4, Officer; Dakota, 1-4, Officer; Cheerleader, 3; Student Council, 3, 4; Junior and Senior Plays.



SANDRA MUDDER

Band, 1-4; Chorus, 1, 4; FHA, 1-4, Officer; Head Librarian; Sweetheart Queen, Dakota, 1-4; Cubette, 2-4, Officer; Student Council; Junior and Senior Plays; Class Officer, 4.



MARLYS QUALL

Band, 1-4; Chorus, 1-4; FHA, 1-4, Officer; Junior and Senior Plays.



JOHN REPP

Chorus, 2-4; Dakota, 4; Junior and Senior Plays; Football Manager.



ELDORA SHUCK

Chorus, 1, 3, 4; FHA, 1-4; Homecoming Queen; Junior and Senior Play; Class Officer, 2; Valedictorian.

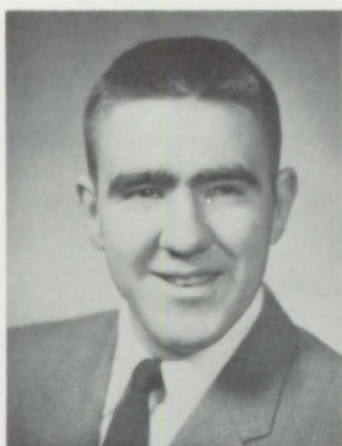


LORNA SOGN

FHA, 1-4; Dakota, 3, 4, Officer; Chorus, 1, 4; Senior Play.



**BEVERLY STENE**  
 Band, 1-3; Chorus, 1-4; FHA, 1-4;  
 Dakota, Officer; Girls' State; Junior  
 and Senior Plays.



**RICHARD STROSHANE**  
 Band, 1-4; Football, 1-4; Senior Play.



**JAMES THORMODSGAARD**  
 FFA, 1-4, Officer; Class Officer, 3;  
 Junior and Senior Play; 1-Act Play.



**LEROY VOEGELI**  
 FFA, 1-4, Officer; Chorus, 1-4;  
 Dakota, 1-4; Cubette, 2, 3.

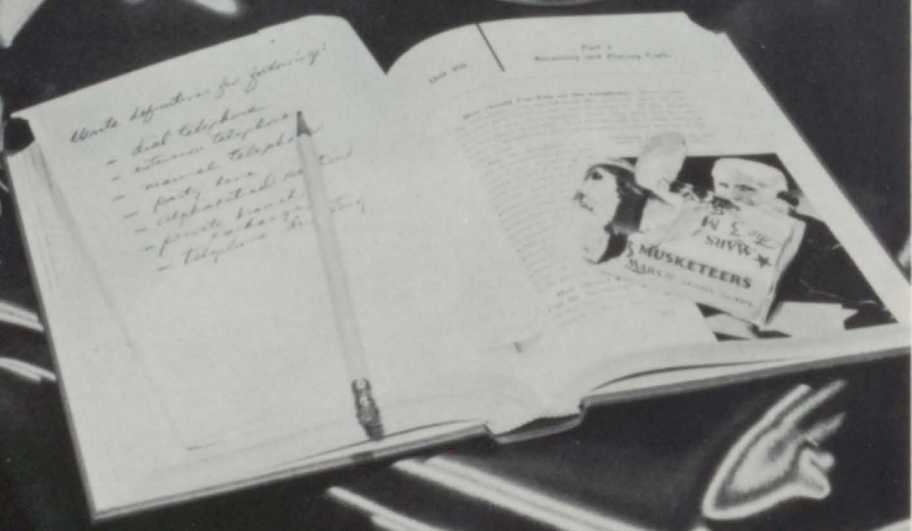
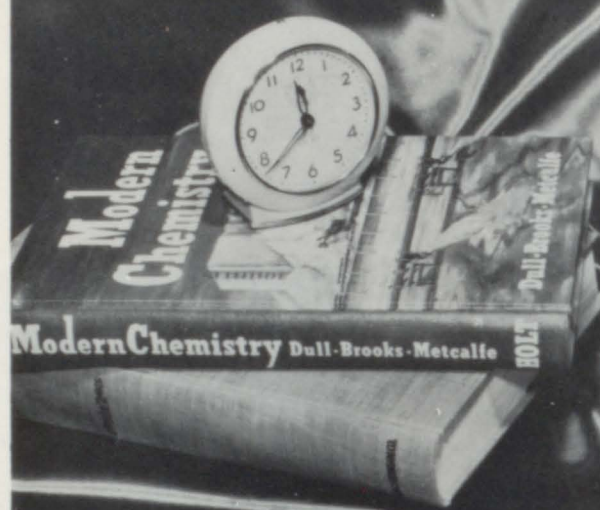


**KALEEN WADDELL**  
 Band, 1-4; Chorus, 1-4; FHA, 1-4;  
 Officer; Class Officer; Dakota Ed.;  
 Junior and Senior Play; Minnie Larson  
 Award.



**ORRIS WELCH**  
 Band, 1-4; Chorus, 1-4; FFA, 1, 2;  
 Cubette Ed.; Boys' State; Junior and  
 Senior Play; Salutatorian.

# Undergrads



Write definitions for following!

- dial telephone
- automatic telephone
- manual telephone
- party line
- alphabetical exchange
- private branch exchange
- telephone





MERLOWE  
ANDERSON  
President



MARCIA  
DAY  
Vice-President



RONALD  
QUALL  
Treasurer



JUDY  
WELLS  
Secretary

## Junior

MARY  
ANDERSON

DOUGLAS  
COSTAR

MARJORIE  
ERICKSON

JOHN  
GUBBRUD

RENEE  
HAMMERSTROM

RENETTE  
HAMMERSTROM

SALLY  
HERBRANDSON

ARVID  
HOLTHE

KENNETH  
HOLTHE

GLEN  
HONGSLO





MARLYS  
HONGSLO



JAN  
JOHNSON



STEWART  
KEISER



LOREETA  
McCALL

## Class

CHARLES  
PETERSON

JANICE  
PETERSON

LELAND  
SAUGSTAD

RONALD  
SIEMERS

ROBERT  
SKINNER

LOREN  
SOLBUE

LEROY  
SVEGGEN

BRADLEY  
TUCKER

CHARLES  
TURNER

JUDY  
WARNKVIST





# Sophomores



FIRST ROW: Barbara Elving, Marjean Huebner, Mary Ann Siemers, Renee Trudeau, Lois Wiberg, Diane Mudder, Adele Johnson, Marlis Krause.  
 SECOND ROW: Elaine Fickbohm, Beverly Sogn, Lauralee Eidsness, Lynn Bartlett, Peter Repp, Douglas Saugstad, Francis Peterson, Mr. Oaks.  
 THIRD ROW: Gene Thormodsgaard, James Ludwig, Owen Buum, Rodney Hanson, Dale Siemers, David Satter, Vivian Hagen.  
 FOURTH ROW: Howard Schollerman, Dale Peterson, Dennis Dahlin, Sharon Ball, Diane Ericson, Doreen Numsen, Sandra Eggen.  
 FIFTH ROW: Lauren Lind, Dennis Edson, James Scott, Kent Edson, John Larson, David Anderson, Gloria Ludwig, Elaine Nylund.



A. Johnson, Secretary; P. Repp, Treasurer; J. Larson, Vice-President; L. Lind, President.



P.T.A. skit "The Wax Figures." D. Edson and D. Mudder are the "dummies."

# Freshmen



FIRST ROW: Milton Williams, Larry Sommervold, Curtis Sandval, Edward Peterson, Gaylord Thormodsgaard, Marvelyn Evjen, Esther Krause, Geraldine Hartman, Karen Anderson.  
 SECOND ROW: Mr. Dobberstein, Merlyn Sommervold, James Clementson, John Satter, Duane Fickbohm, David Swanson, Norman Ronell, Lois Peterson, Carol Thormodsgaard, Calvin Peterson.  
 THIRD ROW: Ione Siemers, Marietta Day, Coleen Dean, Neal Thormodsgaard, Dick Dobbert, Clifford Gunnare, Leland Danielson, Gary Kratochvil.  
 FOURTH ROW: Gary Hendricks, Karen Lykken, Sharon Doty, Carol Campbell, Ronald Holthe, Carol Lundberg, Beverly Peterson, Larry Shuck, Verdel Swanson.  
 FIFTH ROW: John Elving, Darlene Hamilton, Judith Beeler, Marcella Huebner, Derwin Sommervold, Orvin Erickson, Clayton Campbell, Steven Ericson, Gordon Schoellerman.



The freshmen presented the "Steve Allen Show" for their skit at the P.T.A. Carnival.



J. Clementson, Vice-President; G. Kratochvil, Secretary; S. Ericson, President; C. Gunnare, Treasurer.



FIRST ROW: Donald Larson, Francis Peterson, Thomas Engebretson, Gordon Powell, Thomas Tucker, Dennis Huddleston, Sharon Westling, Richard Trandahl.  
 SECOND ROW: Betty Williams, Gracia Bergstrom, Alona Keiser, Delray Stephens, Myrna Solberg, Janis Westin, David St. Pierre, Mrs. Peterson.  
 THIRD ROW: Susan St. Pierre, Calvin Waddell, Harold Naeve, William Rabey, Linda Trudeau, Betty Dobberstein, Sharon McKellips.

FIRST ROW: Arthur Dobberstein, Carol Hafner, Eileen Lapour, Danny Parsons, Vicki Stubbs, Bruce Ellingson, Cassandra Day, Donald Anderson.  
 SECOND ROW: Greg Hammerstrom, Gary Hongslo, Marlyn Dietrich, Timothy Repp, Cynthia Trudeau, Norma Williams, Mrs. McGuire.  
 THIRD ROW: Kathy McKellips, Janis Westin, Cathleen Campbell, Leonard Elving, Sandra Swenson, Marcella Krause, Gary Gevik.





FIRST ROW: Connie Stubbs, Clarice Anderberg, Merlyn Solberg, Robert Fickbohm, Jeffery Trudeau, Scott Hammerstrom.  
 SECOND ROW: Margery St. Pierre, Beverly McKellips, Jane Westin, Donald Keiser, Ronald Wipf, Ronald Trandahl, Miss Dimick.  
 THIRD ROW: Darla Anderberg, Cecilia Day, Bruce Westling, Kathy Naeve, Margery Westin, Conroy Campbell.



FIRST ROW: Trudy Stubbs, Maria Trudeau, Ann Gevik, Robert Anderson, Larry Anderson, Carol Westin, Judy Larson.  
 SECOND ROW: David Hebert, Delmar Fickbohm, Douglas Fickbohm, Vance Keiser, Charlotte Stoen, Randy Wipf, Allan Powell, Colleen Campbell.  
 THIRD ROW: Bruce Elving, Allen Trudeau, Barbara Wahl, Candy Anderberg, Zelda Rabey, Micheal Hafner, James St. Pierre, Miss Evans.  
 FOURTH ROW: Micheal Pederson, Eunice Krause, Greg Gevik, Tommy Nelson, Martin Bum, Sheila Johnson, Mark Numsen.

# Activities



B  
A  
N  
D



FIRST ROW: J. Warnkvist, M. Quall, M. Anderson, L. McCall.  
 SECOND ROW: D. Anderson, S. Ericson, M. Day, M. Day, L. Eidsness, G. Bergstrom, S. Eggen.  
 THIRD ROW: M. Stiemers, J. Wells, S. McKellips, K. Waddell, G. Kratochvil, O. Buum, P. Repp.



ENTHUSIASTIC PEP BAND  
 PLAYED AT EVERY  
 HOME GAME.



SOLOISTS  
 KNEELING: M. Day, C. Dean.  
 STANDING: D. Dean, K. Waddell, M. Day, D. Numsen, L. McCall.



FIRST ROW: A. Johnson, B. Dobberstein, S. St. Pierre, S. Mudder, R. Strohane.  
 SECOND ROW: D. Dahlin, O. Welch, C. Dean, R. Siemers, C. Turner, J. Lind, D. Numsen.  
 THIRD ROW: D. Dean, M. Krause, Mr. Dettman, D. Peterson, E. Nyland, C. Sandval, K. Edson, S. Herbrandson.



CLARINET QUARTET  
 M. Siemers, M. Quall, J. Warnkvist, D. Anderson.



CORNET TRIO  
 O. Welch, D. Dahlin, C. Dean.

## Mixed Chorus



FIRST ROW: L. McCall, M. Krause, B. Peterson, M. Siemers, L. Bartlett, K. Lykken, M. Anderson, B. Stene, K. Waddell, S. Mudder, E. Nylund, E. Fickbohm, S. Ericson, S. Eggen, M. Day, V. Hagen, D. Numsen, A. Johnson, C. Dean.  
SECOND ROW: L. Eidsness, E. Shuck, R. Hammerstrom, M. Quall, R. Hammerstrom, M. Day, J. Beeler, S. Herbrandson, S. Doty, J. Warnkvist, C. Thormodsgaard, P. Repp, J. Clementson, C. Gunnare, L. Danielson.  
THIRD ROW: J. Repp, C. Sandval, R. Hanson, O. Buum, D. Anderson, O. Welch, D. Dean, D. Costar, L. Solbue, D. Sommervold, S. Keiser, R. Quall, K. Bartlett, L. Sveegen, K. Edson, S. Ericson, D. Sommervold.

## Girls' Sextette



J. Warnkvist, M. Anderson, B. Stene, K. Waddell, M. Quall, R. Hammerstrom.

## Pianist



Marcia Day at the keyboard.



# Girls' Glee Club



FIRST ROW: B. Elving, L. McCall, B. Peterson, M. Krause, M. Siemers, L. Bartlett, C. Dean, M. Anderson, Mr. Dettman, E. Nylund, E. Fickbohm, S. Ericson, C. Campbell, S. Eggen, D. Mudder, V. Hagen, D. Numsen, A. Johnson.

SECOND ROW: L. Anderson, J. Wells, B. Sogn, I. Siemers, J. Peterson, L. Sogn, C. Lundberg, K. Lykken, K. Waddell, B. Stene, J. Warnkvist, D. Ericson, G. Ludwig, E. Krause, C. Thormodsgaard, G. Hartman.

THIRD ROW: L. Eldsness, E. Shuck, R. Hammerstrom, M. Quall, J. Beeler, M. Day, S. Ball, S. Herbrandson, S. Mudder, J. Lind, R. Hammerstrom, S. Doty, M. Day, M. Evjen, R. Trudeau, M. Huebner, L. Wiberg.

## Soloists

The South Dakota Region I music contest was held at Vermillion on April 12. Alcester fared very well there, receiving a Superior in Band and Girls' Glee Club. Those rating Superior at the Solo and Small Ensemble Contest were: Dennis Dean, Tuba; Kaleen Waddell, Drums; Marcia Day, Bassoon; and Cornet Trio.



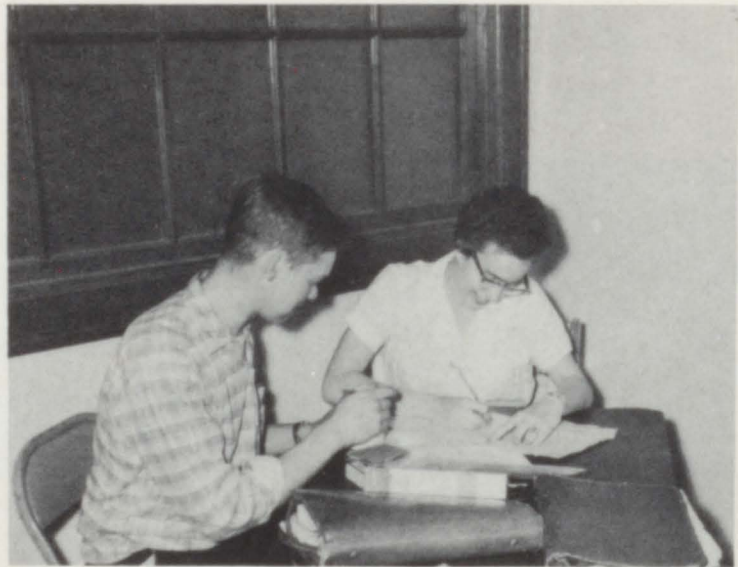
M. Quall, M. Anderson, K. Waddell, S. Ericson.

# Cubette



D. Leafstedt, Photographer; K. Bartlett, Art Editor; R. Hammerstrom, Assistant Art Editor; M. Day, Assistant Editor; O. Welch, Editor; S. Mudder, Business Editor; M. Anderson, Assistant Business Editor; Mrs. Baird, Advisor.

The staff was hard at work this year. Cutting pictures, pasting pictures, writing captions, soliciting ads, and more pasting characterized the work on the Cubette. A later deadline and a summer delivery of the annual gave us more time so that we worked at a more leisurely pace than in previous years.



Editors at work.

# Dakota



SEATED: L. Sogn, Head Reporter; D. Leafstedt, Sports Editor; B. Stene, Assistant Editor; K. Waddell, Editor; S. Ericson, Business Editor; J. Lind, Feature Editor; Mrs. Baird, Advisor.  
STANDING: J. Johnson, Junior Sports Editor; J. Wells, Junior Assistant Editor; S. Herbrandson, Junior Editor; A. Holthe, Junior Business Editor; J. Warnkvist, Junior Feature Editor.



Crank 'er up girls!

The monthly publications of the Dakota sent a number of our students scurrying around getting stories for the paper. The busiest of all was Kaleen Waddell who planned and directed the work on each publication. The Staff got some new experience since the paper was mimeographed during the last half of the year.



King  
Kerry

Queen  
Eldora



C. Gunnare, M. Siemers, C. Peterson, S. Ericson, W. Johnson, K. Bartlett, E. Shuck, K. Waddell, C. Anderberg, M. Anderson, D. Saugstad, C. Lundberg.  
In front: J. Larsen, C. Campbell, M. Hafner, B. Elving.



Wonder who's in step?

# Sweethearts Sharon & Sandra



All those gathered for the crowning of the Sweetheart Queen were surprised when instead of the customary one queen, a tie in the voting created two queens.



M. Quall, S. Ericson, S. Mudder, J. Lind, K. Waddell.



The first dance of the evening.

## "Take Your Medicine"

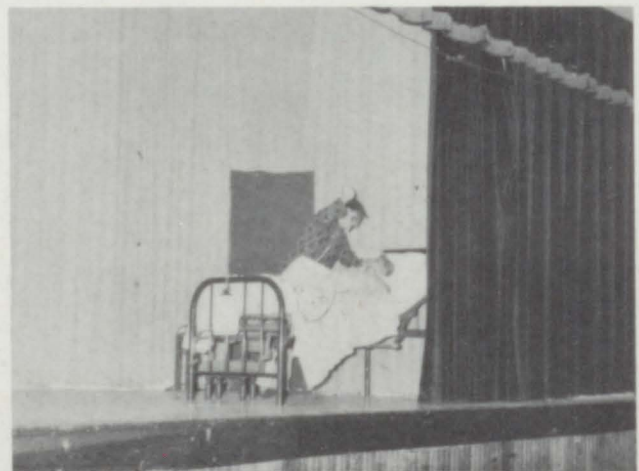


THE CAST

Junior Play actors included: Mary Anderson, Merlowe Anderson, Douglas Costar, Marcia Day, Marjorie Erickson, Renee Hammerstrom, Renette Hammerstrom, Sally Herbrandson, Jan Johnson, Loreeta McCall, Janice Peterson, Ronald Quall, Bradley Tucker, Judy Warnkvist, Judy Wells. The play was under the able direction of Mrs. Claire Finnie.



My! What service! So attentive these nurses are.



Through your heart! That's where this dagger goes! Through the heart!

## "Bolts and Nuts"



DIRECTOR OAKS



THE CAST

The members of the senior play cast were K. Waddell, E. Shuck, O. Eidsness, S. Ericson, J. Lind, B. Stene, D. Leafstedt, M. Quall, L. Anderson, K. Bartlett, C. Anderberg, O. Welch, L. Sogn, J. Repp, D. Stroshane, and J. Thormodsgaard. Mr. Oaks was the director with S. Mudder the assistant director.



I'll give you a dollar if you'll take that cat out of here.



Lovely throats I love to cut.



She's a raving paranoic!



FIRST ROW: Mr. Dobberstein, Advisor; W. Johnson, Parliamentarian; J. Johnson, Reporter; L. Voegeli, Secretary; J. Thormodsgaard, President; C. Hebert, Vice-President; C. Peterson, Treasurer; L. Saugstad, Sentinel.  
 SECOND ROW: E. Peterson, C. Sandval, V. Swanson, D. Pickbohm, G. Thormodsgaard, N. Thormodsgaard, C. Turner.  
 THIRD ROW: F. Peterson, H. Schoellerman, D. Dobbert, L. Sommervold, G. Hendricks, D. Swanson, L. Danielson, M. Sommervold, R. Holthe, C. Peterson.  
 FOURTH ROW: D. Saugstad, D. Peterson, G. Thormodsgaard, D. Dahlin, J. Satter, G. Kratochvil, C. Gunnare, L. Shuck, D. Satter, S. Ericson, O. Erickson.  
 FIFTH ROW: J. Scott, J. Gubbrud, L. Solbue, R. Lapour, S. Keiser, D. Sommervold, L. Sveeggen, K. Holthe, R. Skinner, R. Siemers, R. Hanson, G. Schoellerman.



George B. German speaking at the banquet.



Einar Anderson receiving the Honorary Chapter Farmer award.





FIRST ROW: S. Herbrandson, Parliamentarian; R. Hammerstrom, Historian; J. Lind, Treasurer; M. Anderson, Secretary; A. Johnson, President; S. Mudder, Vice-President; S. Ericson, Reporter; K. Waddell, Pianist; Mrs. Ericson.

SECOND ROW: K. Lykken, S. Doty, L. Peterson, C. Thormodsgaard, E. Krause, L. Anderson, G. Hartman, C. Campbell, K. Anderson.

THIRD ROW: M. Huebner, M. Siemers, B. Sogn, L. Wiberg, D. Mudder, J. Wells, L. Bartlett, E. Shuck, C. Lundberg, B. Peterson, M. Krause.

FOURTH ROW: R. Hammerstrom, L. Eidsness, J. Peterson, E. Fickbohm, M. Erickson, D. Hamilton, D. Numsen, M. Day, I. Siemers, M. Evjen, G. Dean, L. Sogn, D. Hanson.

FIFTH ROW: M. Hongslo, B. Stene, J. Warnkvist, M. Day, S. Ball, M. Quall, D. Ericson, S. Eggen, V. Hagen, G. Ludwig, M. Huebner, E. Nylund, J. Beeler.

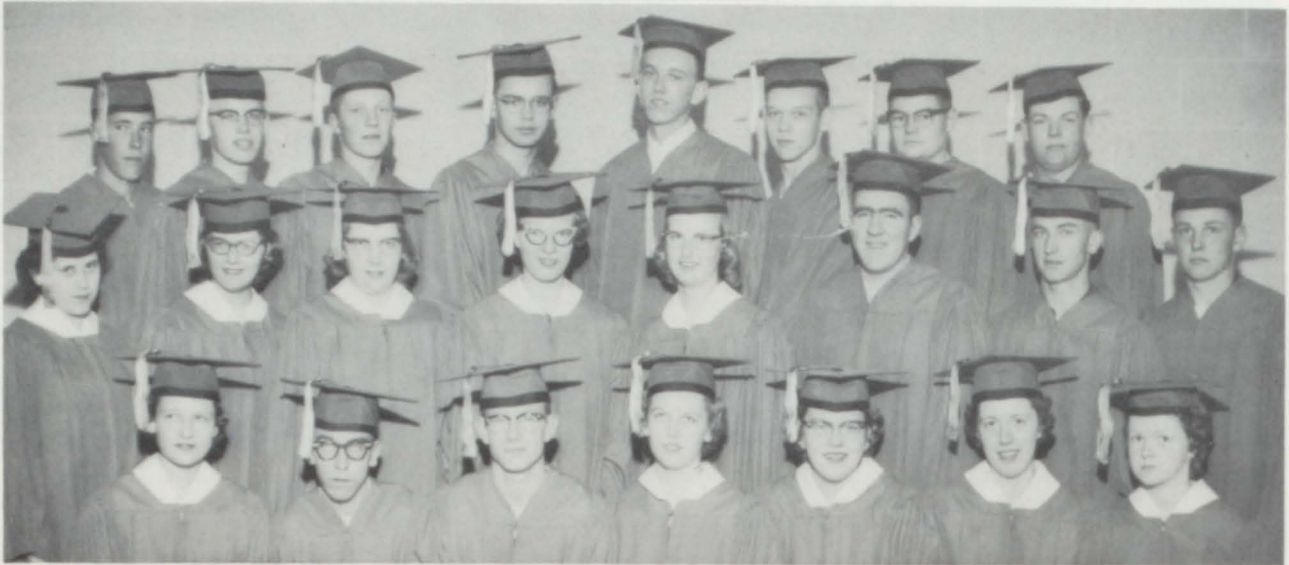


The Nathanael ladies preparing the FHA Banquet.



Mrs. Bergstrom speaking at the FHA Banquet.

# Graduates



FIRST ROW: Shuck, Repp, Anderberg, Ericson, Quall, Sogn, Anderson.  
SECOND ROW: Hansen, Lind, Stene, Waddell, Mudder, Strohane, Voegeli, Bartlett.  
THIRD ROW: Hebert, Thormodsgard, Eidsness, Leafstedt, Lapour, Welch, Dean, Anderson.

## JUNIOR-SENIOR BANQUET



Sidewalk cafe in Paris on banquet night.

The seniors ended their four years at AHS with much activity. On May 5 they journeyed to Sioux Falls on a tour with Mr. Oaks and Mr. Nulty. The juniors entertained the seniors at a banquet in the Auditorium on May 6. The theme of the banquet was "Evening in Paris." Graduation week was a very busy one. On May 12 and 14 the seniors enjoyed breakfasts at the golf course. Many said it was the most fun of all. The Baccalaureate Service was held on May 11. On May 15 the big night finally arrived when the seniors received the long-awaited diplomas.

## Library



FIRST ROW: S. Eggen, V. Hagen, A. Johnson, Mrs. Finnie, D. Mudder, S. Herbrandson, S. Mudder.  
SECOND ROW: L. McCall, R. Hammerstrom, K. Waddell, S. Ericson, M. Day, I. Siemers, C. Dean, L. Peterson.

## Declam



FIRST ROW: C. Lundberg, S. Herbrandson, D. Ericson, R. Hammerstrom, J. Warnkvist, M. Siemers, S. Ball.  
SECOND ROW: Mrs. Finnie, B. Peterson, M. Day, M. Anderson, J. Peterson, M. Evjen, J. Wells.

# Student Council



SEATED: C. Anderberg, S. Ericson, J. Lind, S. Eggen, S. Herbrandson, J. Warnkvist, D. Saugstad.  
STANDING: J. Satter, E. Peterson.

# Idle Scenes



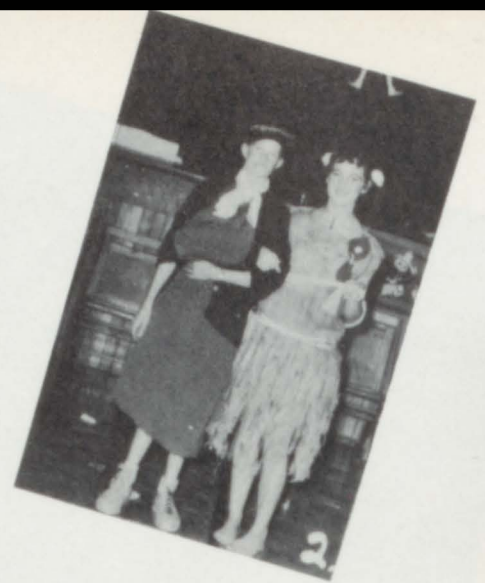
Study? Hall



What a life!



1. Yea team! 2. The Monday night fights are on the air at the P.T.A. carnival. 3. "Those qualities of leadership..." 4. Madam Zorro tells all at the P.T.A. carnival. 5. Junior class presents spring fashions at P.T.A. carnival. 6. Aren't they cute?

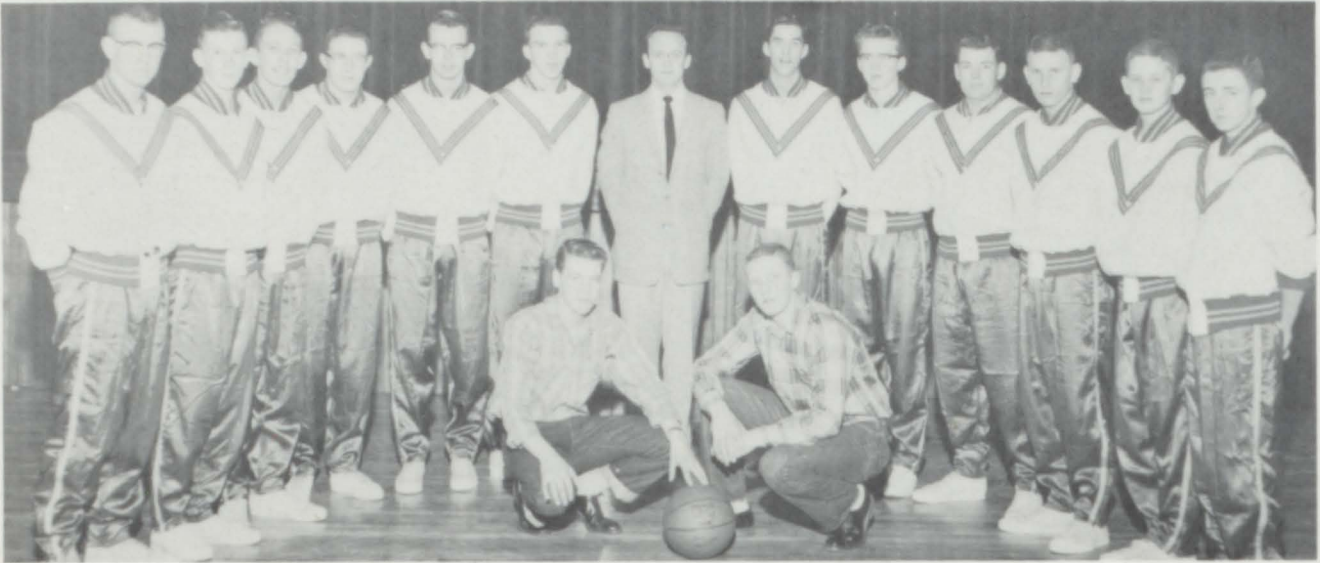


1. Watch those tender toes! 2. King and Queen of hobos at the Halloween party. 3. The Kangaroo at the P.T.A. zoo. 4. It's "SUGARTIME." 5. The ladies who made the Halloween party possible. 6. The Dixieland Ten.

*Sports*



## "A" Team



STANDING: C. Anderberg, G. Hongslo, B. Tucker, C. Peterson, D. Leafstedt, W. Johnson, Mr. Oaks, D. Costar, K. Edson, R. Anderson, J. Larson, O. Buum, G. Kratochvil.  
 KNEELING: M. Anderson, O. Eidsness.

## "B" Team

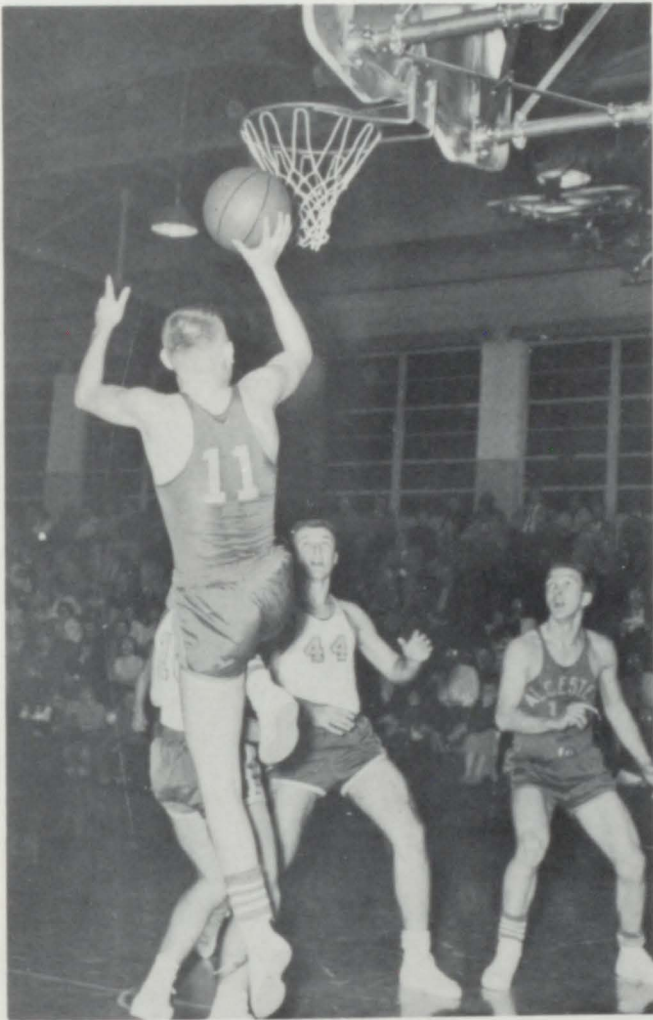


KNEELING: J. Repp, P. Repp, J. Clementson, J. Satter, C. Gunnare, D. Saugstad.  
 STANDING: Mr. Thomas, L. Hagen, D. Edson, L. Saugstad, J. Gubbrud, S. Ericson, D. Satter, J. Ludwig, K. Bartlett.



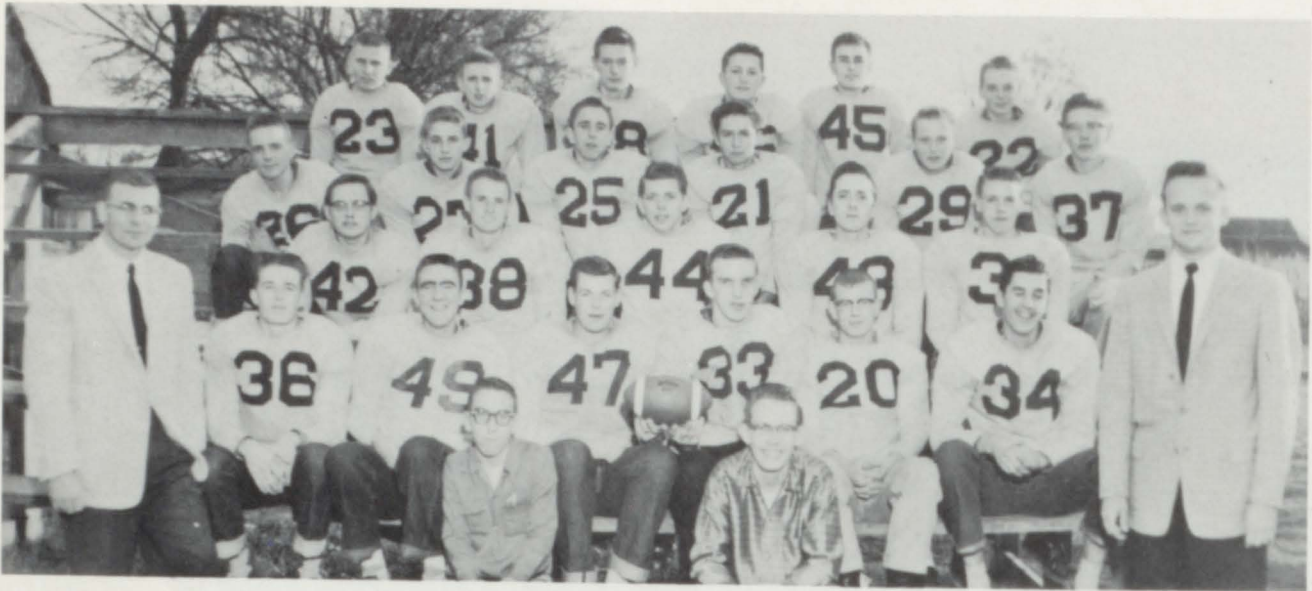
Opponents		Alcester
Hudson	39	55
Gayville	47	55
Hawarden	54	55
Hurley	28	34
Worthing	67	72
Beresford	64	45
Canton	37	38
Parker	63	55
Centerville	38	27
Gayville	45	65

Opponents		Alcester
Worthing	60	56
Lennox	66	44
Elk Point	68	49
Hurley	65	76
Beresford	70	44
Canton	60	62
Parker	51	45
Centerville	75	56
Lennox	65	54
Elk Point	70	53



WHAT FORM!

The two high scorers, Wayne Johnson and John Larson, show how Alcester defeated the Canton team!



FIRST ROW: M. Thomas, J. Repp, B. Tucker, I. Oaks.  
 SECOND ROW: C. Peterson, D. Strohane, R. Anderson, W. Johnson, C. Anderberg, D. Costar.  
 THIRD ROW: D. Anderson, L. Saugstad, J. Gubbrud, J. Johnson, M. Anderson.  
 FOURTH ROW: D. Satter, L. Hagen, P. Repp, J. Ludwig, L. Lind, K. Edson.  
 FIFTH ROW: J. Larson, G. Kratochvil, D. Edson, C. Gunnare, D. Saugstad, J. Satter.

## Football

### Alcester

6  
7  
6  
0  
7  
6  
19

Canton  
Centerville  
Parker  
Elk Point  
Beresford  
Hurley  
Lennox

### Opponents

26  
25  
13  
59  
27  
12  
34



Number one Boosters.

# Cheerleaders

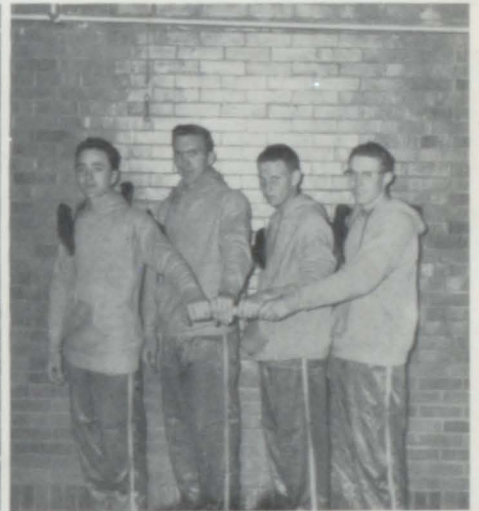


A. Johnson, D. Numsen, L. Bartlett, D. Ericson, S. Eggen, V. Hagen.

# Track



FIRST ROW: D. Costar, W. Johnson, J. Larson, C. Peterson, J. Johnson, K. Edson.  
 SECOND ROW: Mr. Thomas, R. Hanson, O. Buum, S. Ericson, D. Satter, L. Hagen, Mr. Oaks.



RELAYERS



*Advertising*

## Cubette

Alcester Locker Plant  
Farmers Union Co-op  
F. F. A.  
F. H. A.  
H & N Grocery  
Larson Drug Store  
Lyn-El Gardens  
McKellips Insurance  
Metz Baking Company  
Moris' Grocery  
Nora Co-op Creamery  
O. G. Beck  
P. T. A.  
R. E. A.  
Shuck Brothers Garage  
Stubbs Barber & Beauty  
Terrace Park Dairy  
Thompson Yards  
Tollingers Photo Studio  
Wheeler & Anderson

The above firms have supported the Cubette with a contribution of \$10.00

## Boosters

- \*Alcester Liquor Store
- \*Alcester Union
- \*Dr. Louis Shoraga
- \*Great Plains Lumber Company
- \*Stroshane's Hardware
- \*Tom's Standard Service
- \*Westin Electric
- Alcester Cleaners
- Art's Service
- Dr. C. E. Johnson
- Emery's Recreation
- Gustafson & Anderson Garage
- Nilson Funeral Home
- Nygaard's Cafe
- Jules Ofstad
- Paul's Produce
- Pete's Produce
- Rowley Elevator
- Swenson's Gamble Store
- Swenson's Grocery
- Victor Westlund

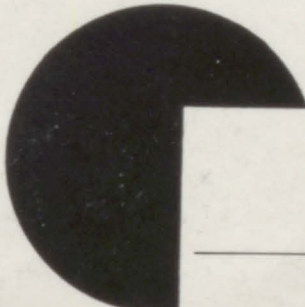
\*These firms have boosted the  
Cubette with a contribution  
of \$5.00 or more.



# ANNUALS OF DISTINCTION

for  
High Schools  
Colleges and  
Universities

*Walsworth*  
PUBLISHING COMPANY  
MARCELINE, MISSOURI



THIS ANNUAL BELONGS TO \_\_\_\_\_

